

JulieAnn Stawicki

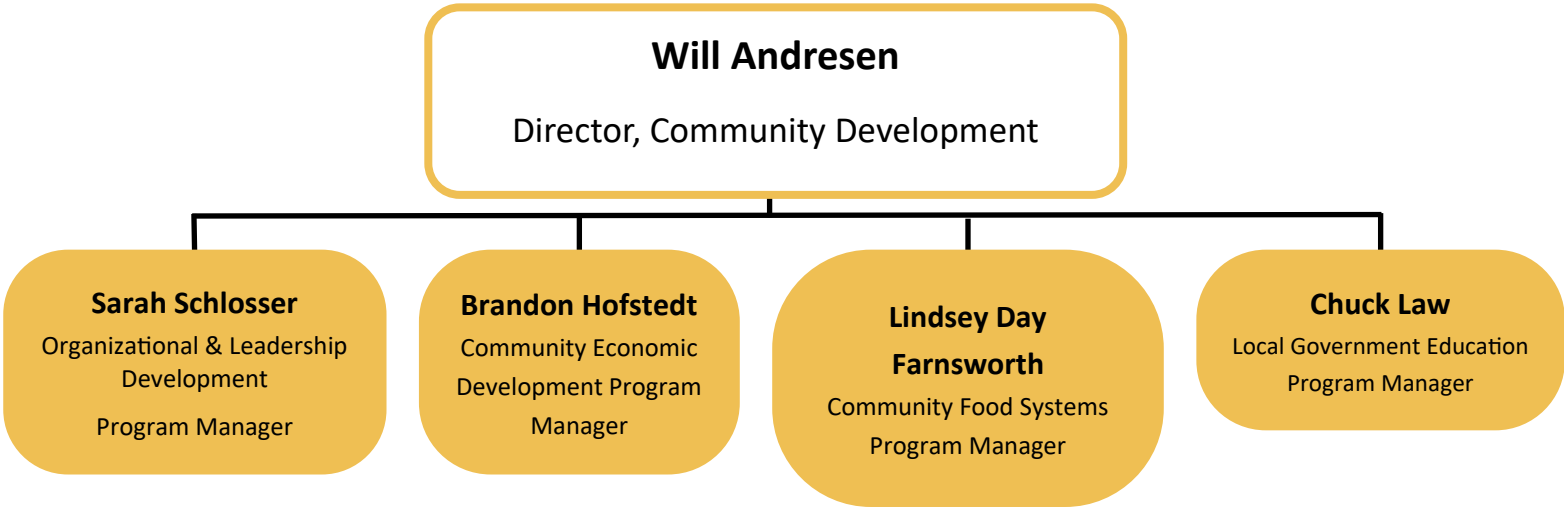
**Associate Dean (interim)
Youth, Family & Community
Development**

JulieAnn.Stawicki@wisc.edu

608-262-8359

Campus	Division of Extension
Education	Ph.D. Clinical Psychology, Michigan State University
	M.A. Clinical Psychology, Michigan State University
	B.S. UW-Madison

JulieAnn Stawicki was appointed as the Interim Associate Dean in August 2017. She is also an Associate Professor in the Department of Extension and a Youth Development Specialist. Her prior experience within Extension includes serving as a statewide specialist in the 4-H Youth Development program and as the leader of the Health Task Force in the Family Living program. JulieAnn served as a post-doctoral fellow in School of Education and Social Policy at Northwestern University. Her publications and grant-supported projects focus on reaching under-served and neglected audiences, improving the quality of community-based youth programs and addressing community health outcomes.



Affiliated Campus-Based Centers

Center for Cooperatives (College of Agriculture)

Director: Brent Hueth

Applied Population Laboratory (College of Agriculture)

Director: Catherine Curtis



Will Andresen

Institute Director

William.Andresen@wisc.edu

715-561-2695

Institute	Community Development
Campus	Division of Extension
Education	M.A. Geography and Planning, University of Toledo B.S Biophysical Systems, Northern Michigan University

Will Andresen provides administrative and programmatic leadership for community development in numerous programming areas including organizational development, leadership development, community economic development, community food systems and local government. Will’s prior Extension experience includes 14 years as a community resource development educator in Iron County and as the interim North Central Regional Director. Before joining Extension in 2002, Will worked as a community development director, chamber of commerce executive director and a community planning consultant.



Sarah Schlosser

**Organizational & Leadership
Development Program
Manager**

sarah.schlosser@wisc.edu

608-263-0817

Institute	Community Development
Primary Program	Leadership Wisconsin
Campus	Division of Extension

NO BIO



Alan (Larry) Jones

**Leadership & Organizational
Development Specialist**

Larry.Jones@wisc.edu

608-262-9908

Institute	Community Development
Primary Program	Organizational & Leadership Development
Campus	Division of Extension
Education	Ph.D. Continuing and Vocational Education, University of Wisconsin- Madison

Larry Jones is a statewide specialist in the Community Development Institute. He has provided leadership for program development and evaluation and nutrition education programs for the state of Wisconsin and nationally. Larry has worked in community development and disaster response efforts in countries of Asia, Africa, and Central and South America. He currently serves on the Board of Directors of an international relief and development association registered in Geneva, Switzerland. Larry's current interests are in building the leadership and organizational capacity of the nonprofit sector.



Daniel Veroff

Demographic Specialist

DLVeroff@wisc.edu

608-265-9545

Primary Institute Affiliation	Community Development
Program	Organizational & Leadership Development
Secondary Institute Affiliation	Human Development & Relationships
Program	Life Span
Campus	College of Agriculture & Life Science
Education	M.C.R.P, University of Memphis

Dan Veroff is an Extension demographic specialist with the Applied Population Laboratory. He has been with the APL since 1998. Within APL, Dan provides demographic data and analysis to Extension's network of county based faculty and state specialists and conducts applied demographic research to support their planning and programming efforts in Wisconsin counties and communities. He also serves on the national steering committee for the State Data Center network. Dan's current research explores ways to build capacity in communities by using participatory methods to build better community information systems, with particular emphasis on emerging GIS technologies.



Brandon Hofstedt

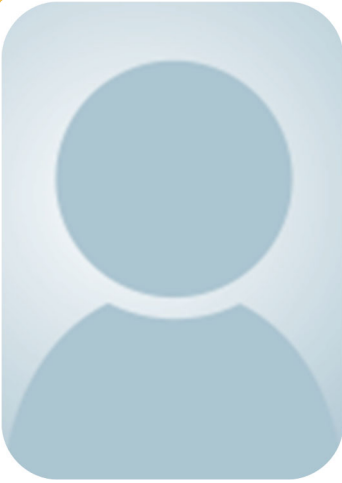
Community Economic Development Program Manager

hofstedt@wisc.edu

715-928-0888

Institute	Community Development
Primary Program	Community Economic Development
Campus	Division of Extension
Education	Ph.D. Sociology, Iowa State University M.S. Sociology, Iowa State University B.A. Sociology, Augsburg College

I wanted to take this opportunity to introduce myself and to express my gratitude and excitement about joining the CED Extension program and taking on the responsibilities of the program manager. First, for those who don't know me, I served as an Associate Professor of Sustainable Community Development and the Chapple Chair of Sustainable Economic Development at Northland College for nearly 10 years. I also founded and directed the Center for Rural Communities, an applied research center located in Ashland, Wisconsin. In these positions, I assisted northern Wisconsin communities, organizations, and leaders on numerous applied research projects, educational opportunities, and social change efforts including quality of life, asset based community development, comprehensive planning, sustainable energy, local food, climate change adaptation, housing development, natural resource management, among others. In my work, my primary goal is to produce useful and impactful research and to provide educational opportunities that lead to lasting and meaningful change.



Timothy Baye

**Business Development
State Energy Specialist**

Timothy.Baye@wisc.edu

Institute	Community Development
Primary Program	Community Economic Development
Campus	Division of Extension
Education	M.A. Managerial Economics and Natural Resource Economics, University of Kentucky M.B.A. Marketing Management, Marquette University B.A. Marketing and Economics, UW-Green Bay

Tim Baye’s research and educational programs serve energy industry executives, professionals and policy leaders. He has over 30 years of experience in industrial renewable energy projects and policy, in education, executive and advisory capacities.



Courtney Berner

**Cooperative Development
Specialist**

CBerner@wisc.edu

608-890-0966

Institute	Community Development
Primary Program	Community Economic Development
Secondary Program	Community Food Systems
Campus	College of Agriculture & Life Science
Education	M.A. Agroecology, UW-Madison B.A. Biology; French; Environmental Studies, Pacific Lutheran University

Courtney Berner served as a cooperative development specialist for the University of Wisconsin Center for Cooperatives until assuming the role of executive director in January 2018. As the executive director, she develops courses, conferences, and other educational programs focused on cooperatives and works closely with the Center’s faculty director on the Center’s strategic direction. Courtney has provided support to new and established cooperatives of all types and in a range of industries including agriculture, grocery, manufacturing, energy, healthcare, and forestry. Her areas of expertise include business development, cooperative finance and governance, and innovative uses of the cooperative model. Prior to joining the Center, Courtney worked at the Worldwatch Institute, an independent research institute devoted to global environmental concerns.



Tessa Conroy

**Community Development Specialist,
Assistant Professor**
Tessa.Conroy@wisc.edu

Institute	Community Development
Primary Program	Community Economic Development
Campus	Division of Extension
Education	Ph.D Economics, Colorado State University

Tessa Conroy's research and outreach focus on community economic growth and development, with particular emphasis on entrepreneurship. Much of her research is used to directly analyze the challenges and opportunities facing the Wisconsin economy.



Steven Deller

**Community Development Economist,
Professor**
SCDeller@wisc.edu
608-263-6251

Institute	Community Development
Primary Program	Community Economic Development
Campus	College of Agriculture & Life Science
Education	Ph.D. Agricultural Economics, University of Illinois at Urbana-Champaign

Steven Deller is a professor in agricultural and applied economics at the University of Wisconsin-Madison where he teaches courses related to community economic analysis. His research interests include modeling community and small regional economies to better understand the changing dynamics of the economy; assessing the impact of those changes; and identifying local economic strengths, weaknesses, opportunities and threats. His most recent book explores how social capital helps us understand why some communities prosper economically and others struggle.



Gary Green

**Community Development
Specialist**

GPGreen@wisc.edu

608-698-0131

Institute	Community Development
Primary Program	Community Economic Development
Campus	College of Agriculture & Life Science
Education	Ph.D. Rural Sociology, University of Missouri

Gary Green is professor and current chair of the Department of Community and Environmental Sociology at the University of Wisconsin-Madison. He teaches courses on community development, urban development, and on the modern American community. Gary has authored several books on these topics as well. His main research interests are community and economic development as well as rural and regional studies. In 2003 he received the Pound Extension Award for his work with Extension and the College of Agricultural and Life Sciences.



Sherrie Gruder

**Sustainable Design Specialist,
Energy on Wisconsin Program Manager**

Sherrie.Gruder@wisc.edu

608-262-0398

Institute	Community Development
Primary Program	Community Economic Development
Secondary Program	Organizational Leadership & Development
Campus	Division of Extension
Education	M.S. University of Illinois at Urbana-Champaign B.A. University of Pennsylvania

Sherrie Gruder is a Sustainable Design Specialist and *Energy On Wisconsin* Program Manager. Sherrie provides statewide education and technical assistance on sustainable community development, sustainable energy strategies, and green building to support the economic vitality of Wisconsin communities, state and local governments, tribes, and businesses. Increased energy literacy is important to equip Wisconsinites to tackle the challenges and embrace the opportunities of the clean energy transition. Sherrie delivers the monthly *Energy On Wisconsin* newsletter, web site and education programs to enhance energy and sustainability literacy and provide insights into the financial, business, policy, technology, infrastructure and partnership aspects of community energy portfolios. She authored *Solar Energy Financing Guide: Empowering Wisconsin Local Governments* and assists local governments with how to profitably and effectively meet their energy independent community goals. Sherrie is a LEED Accredited Professional.



Gail Huycke

**Professor,
Community Development
Extension Educator**
Gail.Huycke@wisc.edu

Institute	Community Development
Primary Program	Community Economic Development
Secondary Program	Organizational & Leadership Development
Campus	Division of Extension

Gail Huycke is a Broadband Community Development Outreach Specialist and Professor in the Center for Community & Economic Development. Her areas of research and outreach include Broadband Adoption & Access, Intergenerational Digital Literacy, and Rural Telehealth.



Todd Johnson

**Land Use & Community
Development Specialist**
TWJohnson6@wisc.edu
715-425-3941

Primary Institute Affiliation	Community Development
Program	Community Economic Development
Secondary Institute Affiliation	Positive Youth Development
Program	Community Youth Development
Campus	UW-River Falls

Todd Johnson is a Land Use & Community Development specialist. In his current role, Todd co-leads the Extension’s Community Vitality and Placemaking research team in which he has been able to work with community design charrettes and placemaking research. Todd has coordinated and participated in community design charrettes in rural Minnesota and Wisconsin for over 20 years. He has a diverse background that includes architecture, technical theatre, public art, education, urban design, and planning. Prior to his work with the University of Wisconsin-River Falls, he worked as a regional planner; an urban designer, a theatrical technical director, designer and lecturer; an architectural designer and construction manager, and as a county educator with the University of Wisconsin-Grant County.



Matthew Kures

Community Development Specialist

Matthew.Kures@wisc.edu

608-265-8258

Institute	Community Development
Primary Program	Community Economic Development
Campus	Division of Extension

Matt Kures works in partnership with Extension’s statewide network of resources to assist communities and organizations in the areas of regional economic analysis, labor force research, socio-economic impact analysis and industry sector competitiveness. Recent examples include an abstract of the Madison region’s agriculture, food and beverage industry cluster and a community impact assessment of the St. Croix River Crossing. Matt is a graduate of University of Wisconsin-Madison in cartography and geographic information systems and was named, “Madison’s 40 Under 40,” by In Business magazine. In 2016, he received the Outstanding Specialist Award from Extension’s Community, Natural Resource and Economic Development program.



Lynn Pitman

Center for Cooperatives Outreach Specialist

Litman@wisc.edu

608-261-1355

Institute	Community Development
Primary Program	Community Economic Development
Secondary Program	Community Food Systems
Campus	College of Agriculture & Life Science

Lynn Pitman is an outreach specialist at the University of Wisconsin Center for Cooperatives, providing resources and assistance to individuals and groups working on Cooperative projects and issues. She also writes and develops educational, program and communication materials to support the Center's outreach activities. Lynn contributes to the Center’s ongoing research on Cooperative economic impacts. Lynn has served on several Cooperative boards, including a new grocery co-op start-up effort, and is engaged in neighborhood planning and development issues. Prior to joining the Center, she was the catalog marketing director at several growing entrepreneurial firms.



William Ryan

**Community Business
Development Specialist**

William.Ryan@wisc.edu

608-263-4994

Institute	Community Development
Primary Program	Community Economic Development
Campus	Division of Extension

Bill Ryan is a Community Business Development educator who works with local economic development professionals, municipal planners, and interested residents wanting to improve their downtown and commercial districts. Awarded the title of Distinguished Lecturer, he has

developed innovative and practical tools to improve the mix of businesses and use of space. The goal of his work is to improve local quality life through increased economic activity in these commercial districts. As a statewide specialist, Bill provides practical, locally-based research and educational programs to inform community planning and investment. He has led the development of the nationally utilized Downtown and Business District Market Analysis Toolbox. This and other research and educational programs have been presented nationally, and continue to be the dominant source of commercial district, community-led market research techniques. In 2005, Bill was awarded the Wisconsin Idea Fellow in recognition for public service on behalf of the UW. Bill's initial years after college were in hotel development. He has worked for Holiday Inns Corporation, Laventhol & Horwath-Boston, and the Boston-based Flatley Company. He transitioned to Extension, working as a tourism specialist, and then a business district economic development specialist. He is a graduate of Cornell University, School of Hotel Administration, and the UW-Madison MBA program.



Rebecca Roberts

Land Use Specialist

Rebecca.Roberts@wisc.edu

715-346-4322

Primary Institute Affiliation	Community Development
Program	Community Economic Development
Secondary Institute Affiliation	Natural Resources
Program	Land & Water
Campus	Division of Extension
Education	M.U.P. Urban and Regional Planning, University of Illinois at Urbana-Champaign B.S. Biology and Environmental Studies, Augustana College

Rebecca Roberts is a land use specialist in the Center for Land Use Education (CLUE) at UW-Stevens Point. Becky provides direct outreach and training to local elected officials, plan commissions, zoning boards, and planning and zoning staff. She focuses on community planning, public participation, and plan implementation, including zoning and subdivision regulations. Becky has also worked directly with communities to evaluate the fiscal impacts of land use decisions, methods to protect wetlands and other natural resources, and techniques to enhance public participation in community decision-making. She is an affiliate of the UW Natural Resources Institute and the Extension Community Development Institute.



Kristin Runge

Community Development Specialist

Kristin.Runge@wisc.edu

608-890-3378

Primary Institute Affiliation	Community Development
Program	Community Economic Development
Secondary Institute Affiliation	Natural Resources
Program	Land & Water Use
Campus	Division of Extension

Kristin Runge is a Mass Communication Specialist in the Center for Community and Economic Development. Her program focus areas include co-leadership of the Community Vitality & Placemaking Team, and Media Use, Public Opinion, & Civic Engagement.



Randy Stoecker

**Professor,
Community Practice Specialist**

RStoecker@wisc.edu

608-890-0764

Primary Institute Affiliation	Community Development
Program	Community Economic Development
Secondary Institute Affiliation	Agriculture
Campus	College of Agriculture & Life Science
Education	Ph.D. Sociology, University of Minnesota M.S. Counseling, University of Wisconsin-Whitewater

Randy Stoecker is a professor in the Department of Community and Environmental Sociology at the University of Wisconsin with an affiliate appointment in the University of Wisconsin Division of Extension Center for Community and Economic Development. He conducts trainings and speaks frequently on community organizing and development, community-based participatory research/evaluation, higher education community engagement, and community information technology. He has led numerous participatory action research projects, community technology projects, and empowerment evaluation processes with a wide variety of community-based groups. Randy has written extensively on community organizing and development and higher education community engagement, among other topics.



Catherine Techtmann

**Professor,
Environmental Outreach
Specialist**

Cathy.Techtman@wisc.edu

715-561-2695

Primary Institute Affiliation	Community Development
Program	Community Economic Development
Secondary Institute Affiliation	Natural Resources
Program	Land & Water Use
Campus	Division of Extension
Education	M.S. Natural Resource Management– Environmental Interpretation

Cathy Techtmann is a professor of Community Resource Development and an environmental outreach state specialist. Prior Extension positions include serving as the Iron County Community Resource Development and Agriculture agent, and education coordinator at the Northern Great Lakes Visitor Center (NGLVC). Cathy has worked as the public information officer for the Ottawa National Forest, in the private recreation business sector, and currently serves in leadership roles in several conservation non-profits. Accomplishments include developing freshwater estuary programming and planning leading to the Lake Superior National Estuarine Research Reserve designation; founding the NGLVC Extension Office and environmental education programming for youth and adults; directing the Gikinoo'wizhiwe Onji Waaban (Guiding for Tomorrow) or "G-WOW" Climate Change Initiative in partnership with the US Forest Service, Great Lakes Indian Fish and Wildlife Commission, National Park Service, and Lake Superior Ojibwe Tribal communities; with an emerging new program focus on environmental leadership development for youth and adults.



Lindsey Day Farnsworth

**Community Food Systems
Program Manager**

ldfarnsworth@wisc.edu

Institute	Community Development
Primary Program	Community Food Systems
Campus	Division of Extension
Education	Ph.D. Environmental Studies, Nelson Institute for Environmental Studies (University of Wisconsin- Madison) M.S. Urban and Regional Planning, UW-Madison B.A. Sociology; Latin American Studies, Brandeis University

As program manager, Lindsey Day Farnsworth will be responsible for building and supporting the programmatic, professional development and budget management needs of our new community food systems program. Lindsey comes to Extension from the UW – Madison Center for Integrated Agricultural Systems where she has worked on applied, participatory, and interdisciplinary research and evaluation on food systems projects spanning the rural-urban continuum from cover crops to urban agriculture and food policy councils. Her research and programmatic work has always been rooted in practical issues facing farmers, local governments, and other practitioners across the food system. Recent work has focused on food distribution and infrastructure development, market and food access, and the development of values-based food supply chains. Since 2012, she has also been an active member of several Madison committees including the Food Policy Council, the Healthy Retail Access Program, and the Public Market Development Committee.



Lori Bakken

Evaluation Specialist

LBakken@wisc.edu

608-890-0221

Primary Institute Affiliation	Community Development
Program	Community Food Systems
Secondary Institute Affiliation	Health & Well-Being
Program	Behavioral Health
Campus	School of Human Ecology
Education	Ph.D. Continuing and Vocational Education, UW- Madison M.A. Medical Microbiology, UW-Madison B.S. Medical Technology, UW-Madison

Drawing from over 25 years of experience in program development, evaluation and research, Lori Bakken’s current work combines participatory approaches to evaluation and systems thinking to understand issues and programs related to food insecurity and food systems. As a professor at the University of Wisconsin’s School of Human Ecology, Department of Civil Society and Community Studies, Lori teaches courses that build capacity for community innovation and transformative evaluation. Her current research investigates the influence of gatekeeping on inclusive evaluation practice.



Caitlin Mckown Bourbeau

Web Developer & Data

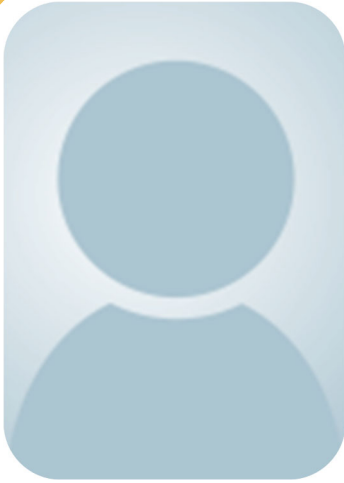
Visualization Expert

Caitlin.Bourbeau@wisc.edu

608-265-9488

Institute	Community Development
Primary Program	Community Food Systems
Campus	College of Agriculture & Life Science

Caitlin Bourbeau is a web developer at the Applied Population Lab (APL) with a focus on GIS. She has an interest in health geography, using GIS to explore and visualize topics related to health care, and she brings a strong design sensibility to her projects. Caitlin’s position is housed in the Department of Community and Environmental Sociology.

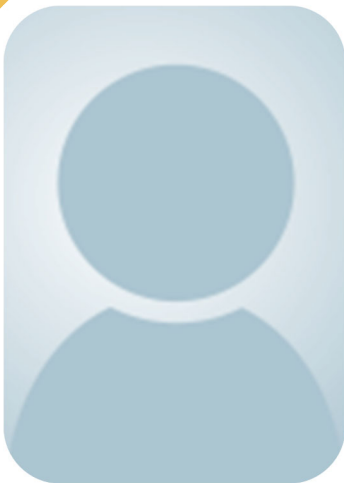


Alfonso Morales

**Professor,
Urban & Regional Planning Specialist**
Morales1@wisc.edu
608-263-4848

Institute	Community Development
Primary Program	Community Food Systems
Secondary Program	Community Economic Development
Campus	College of Letters & Science

NO BIO



Erin Peot

**Rural Development Outreach
Specialist**
Erin.Peot@wisc.edu

Institute	Community Development
Primary Program	Community Food Systems
Campus	Division of Extension

Erin Peot is a Rural Development Outreach Specialist in the Center for Community and Economic Development. Her research includes Restorative and healing food systems development and small-scale food business development.



Chuck Law

**Local Government Education
Program Manager**
Chuck.Law@wisc.edu
608-265-2501

Institute	Community Development
Primary Program	Local Government Education
Secondary Program	Community Economic Development
Campus	Division of Extension
Education	Ph.D. Renewable Natural Resource Studies, University of Arizona UW-Madison alumnus

Chuck Law serves as program manager of UW Division of Extension’s Local Government Education Program and is a community planning and design specialist. The Local Government Education Program is the go-to resource for local officials seeking information and guidance on the proper rules, procedures and policies for performing their elected or appointed position. As program manager, Chuck is responsible for overall program administration, budgeting, partnership relationships and official communications. He served as co-director of Extension’s Center for Community and Economic Development and was an administrative liaison to the Community, Natural Resources and Economic Development Program Area. As an Extension specialist, he is a leading authority on Business Improvement Districts (BIDs), a mechanism for financing programs and services supporting downtown redevelopment in Wisconsin. Chuck is an alumnus of UW-Madison, his degrees include landscape architecture emphasizing community planning and a doctorate in Renewable Natural Resource Studies from the University of Arizona.



Philip Freeburg

**Local Government Law
Educator**
Philip.Freeburg@wisc.edu
608-262-5103

Institute	Community Development
Primary Program	Local Government Education
Campus	Division of Extension
Education	J.D. University of Wisconsin B.A. History, UW-Milwaukee

Attorney Philip Freeburg is a senior lecturer at the Local Government Center of the University of Wisconsin Division of Extension in Madison. Philip teaches and writes on local government law, including ethics, Open Meetings Law, Public Records Law, roles and responsibilities, Board of Review and land use. Philip served 9 years as Wausau Municipal Judge until December 2008. He was an attorney with the Schofield, Wisconsin firm of Tlusty, Hittner, Kennedy & Freeburg, SC, and was the Langlade County District Attorney and Corporation Counsel from 1984 to 1988, and previously worked in private practice. He is also a member of the Federal District Court Bar for the Eastern and Western Districts and a retired member of the State Bar of Georgia.



Larry Larmer

**Local Government Outreach
Specialist**

LElarmer@wisc.edu

608-262-1156

Institute	Community Development
Primary Program	Local Government Education
Campus	Division of Extension

NO BIO



Brian Ohm

**Professor,
Land Use Law, Environmental
Regulation & Growth
Management Specialist**

BWOhm@wisc.edu

608-262-2098

Institute	Community Development
Primary Program	Local Government Education
Secondary Program	Community Economic Development
Campus	College of Letters & Sciences
Education	J.D. University of Wisconsin Law School M.A. History, University of Wisconsin-Madison B.A. History, Political Science, St. Olaf College

Brian Ohm is a professor in the Department of Planning and Landscape Architecture at UW-Madison and a state specialist in planning law with Extension. His research and teaching focuses on the legal aspects of land use and community planning. He has worked with local governments on various planning initiatives and has helped shape Wisconsin's planning laws. He is the author of numerous publications on Wisconsin land use and planning laws. Prior to joining UW, he worked as an attorney in private practice in Minneapolis and as an attorney for the Metropolitan Council.



Katherine Curtis

**Demographic Specialist,
Associate Professor**
KCurtis@wisc.edu
608-890-1900

Institute	Community Development
Campus	College of Agriculture & Life Sciences
Education	Ph.D Sociology, University of Washington

Katherine Curtis is an associate professor of Community & Environmental Sociology and the director of the Applied Population Laboratory. She teaches courses on spatial data analysis as well as poverty and place. Her work addresses the causes and consequences of migration and population composition population and environment, and inequality. Her analytical approach aims to address spatial and temporal aspects underlying these demographic processes. Katherine’s work consistently engages multiple literatures across disciplines to gain greater substantive and technical insight. She has been published in the field's top journal and featured in special publications and conferences focusing on spatial demography. Katherine is trained in demography, social stratification, and research methods.



Annie Jones

**Professor, Organizational
Development & Tribal Nations
Specialist**
Annie.Jones@wisc.edu
608-262-9558

Institute	Community Development
Campus	Division of Extension
Education	Ph.D. Human and Organizational Systems, Fielding Graduate University; concentration in Transformative Learning for Social Justice Grad. Certificate: Dialogue, Deliberation and Public Engagement, Fielding Graduate University

Annie has worked with Extension for twenty years serving in a variety of capacities including Associate Dean, Special Assistant to the Dean for Strategic Directions and a county-based Community Development Educator. Annie's areas of research include indigenous methodologies like the use of the Native American medicine wheel and cultural teachings to enhance planning and evaluation. Annie specializes in participatory and community-based action research. Through 2019, Annie is the Innovation Facilitation Manager for Extension.



David Long

Spatial Data Analyst
David.Long@wisc.edu
608-262-3097

Institute

Community Development

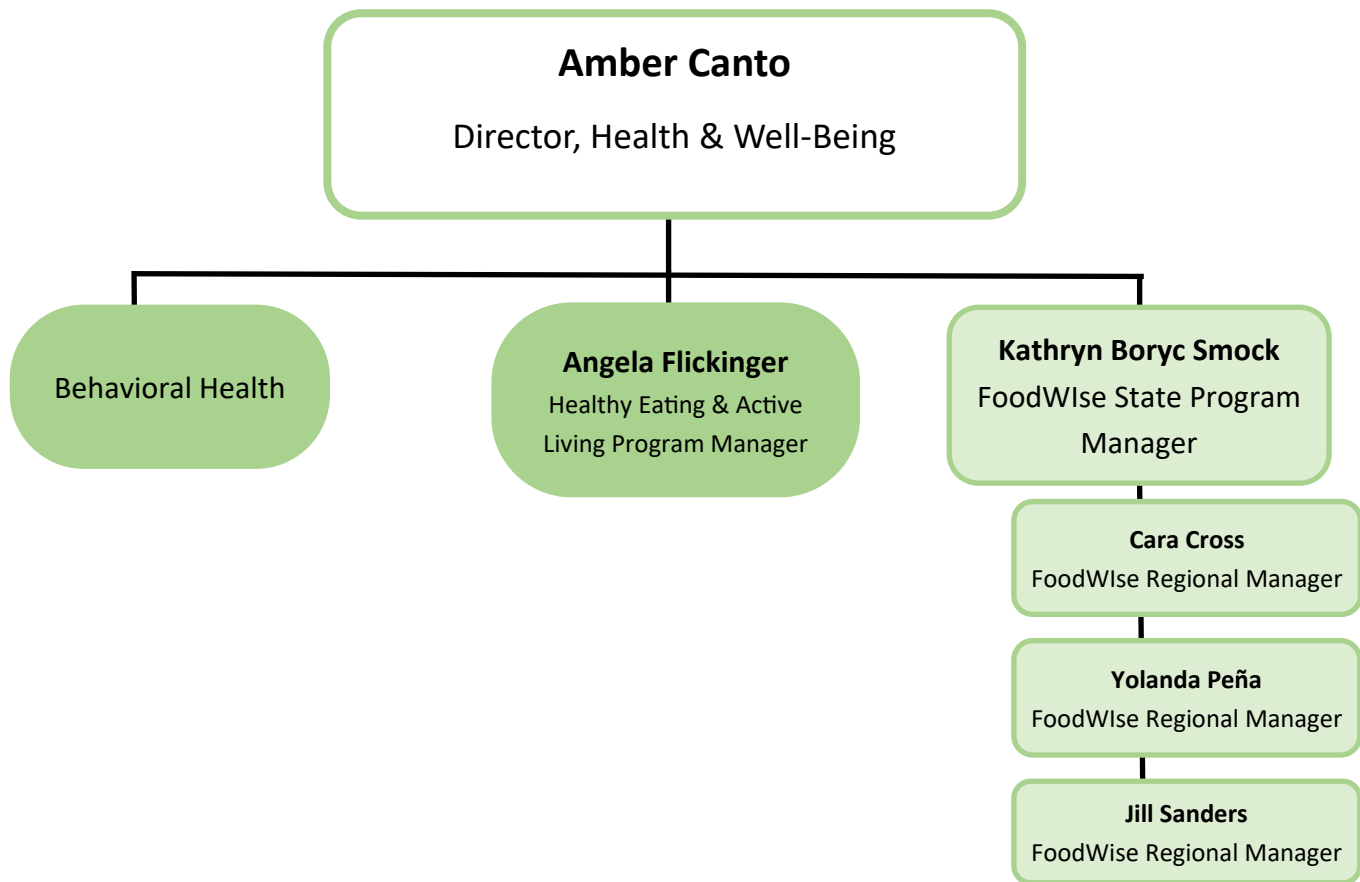
Campus

College of Agriculture & Life Science

David Long is a spatial data analyst who provides high level analytic and research support to the Applied Population Lab (APL), which is housed in the Department of Community and Environmental Sociology at the University of Wisconsin-Madison. He contributes expertise on a range of tools focusing on modeling spatial processes in GIS and statistical frameworks. During his tenure at APL he has researched spatial interpolation methods, small-area population estimation techniques, intersection of biophysical landscape characteristics with census data, and child poverty using spatial regression analysis. Long also co-authored the Wisconsin Hispanic/Latino Chartbooks and since living in Mexico, he has been closely involved with APL projects related to Wisconsin immigration. His recent work has supported efforts to track and monitor neighborhood social conditions and making demographic data accessible to a broader public audience.

For Additional Specialists, see:

- Julie Dawson (Agriculture)
- Anna Haines (Natural Resources)
- Brent Hueth (Agriculture)
- Shiba Kar (Natural Resources)
- Lynn Markham (Natural Resources)
- David Marcouiller (Natural Resources)
- Scott Sanford (Agriculture)
- Brett Shaw (Natural Resources)



Amber Canto

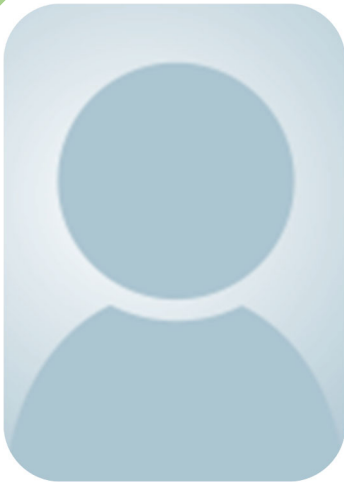
Institute Director

Amber.Canto@wisc.edu

608-262-0384

Institute	Health & Well-Being
Campus	Division of Extension
Education	M.P.H; Global Health Certificate, University of North Carolina at Chapel Hill Gillings School of Public Health B.S. Dietetics; Spanish, UW-Madison

Amber Canto is the director for the Extension Institute for Health & Well-Being. In her role, she provides administrative and programmatic leadership for community-based health promotion programs across multiple issue areas including healthy eating, active living and behavioral health throughout the lifespan. Amber's prior Extension experiences includes serving as the FoodWise State program coordinator and Poverty & Food Security specialist with Extension. Before joining Extension in 2011, Amber worked as a nutrition consultant for the United Nations Children's Fund (UNICEF) in the Dominican Republic, where she coordinated infant and young child feeding interventions along the Haitian-Dominican border.



Jennifer Park-Mroch

Health & Well-Being Specialist

Jennifer.ParkMroch@wisc.edu

608-262-8083

Institute	Health & Well-Being
Primary Program	Behavioral Health
Secondary Program	Healthy Eating & Active Living
Campus	Division of Extension
Education	Ph.D. Human Development and Families Studies, University of Wisconsin-Madison <i>Focus on prevention/intervention science</i>

Jennifer Park-Mroch is a state project and evaluation specialist for the Health and Well-Being Institute. Jen has worked as a project manager on several community based research projects in Extension and University of Iowa Hospitals. Her expertise includes vulnerable families in communities and community based participatory research. Jen has been involved in several Policy, Systems, and Environmental change (PSE) programs, FoodWise, and health projects in health and well-being. She is also leading the multidisciplinary Opioid Task Force team.



Angela Flickinger

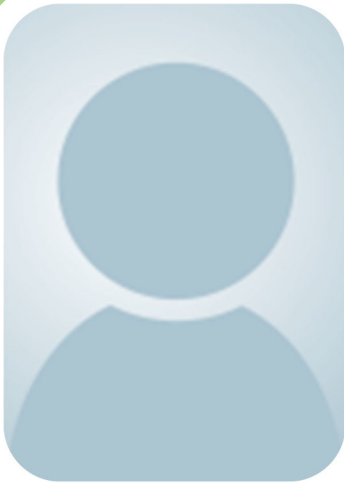
**Healthy Eating & Active Living
Program Manager**

angela.flickinger@wisc.edu

608-757-5059

Institute	Health & Well-Being
Campus	Division of Extension
Primary Program	Healthy Eating & Active Living
Campus	Division of Extension
Education	M.P.H. Public Health, University of North Carolina at Greensboro B.S. Nutrition and Dietetics, University of North Carolina at

Angela Flickinger is the Outreach Program Manager for Healthy Eating and Active Living within the Institute of Health and Well-being with UW-Madison, Division of Extension. Prior to this role, Flickinger was a Professor in the Department of Family Development and a Health and Well-being Educator in Rock County. Flickinger has previously held positions working for WIC (Women, Infants, and Children) in North Carolina and AHEC (Wisconsin Area Health Education Center). Additionally, Flickinger is the StrongBodies (AKA StrongWomen) Ambassador for Wisconsin. <https://fyi.extension.wisc.edu/strongwomenwisconsin/> Her work in WI has been to intentionally create systems, environments, and policies that improve and support individual, family and community health. Flickinger's education, research, and programming efforts are in the areas of health, nutrition, policy, and leadership development. Some of her community efforts include programming in healthy communities, school health initiatives, health equity, coalition capacity building, leadership development, and chronic disease prevention and management. Flickinger holds leadership positions with the Wisconsin Institute for Healthy Aging Steering Committee, the National NorthCentral Integrated Pest Management Advisory Committee, and the National Texas A&M StrongWomen Team. She has also been active in leading local school health coalitions and serving on the advisory committee for the Health Equity Alliance of Rock County.



Judith Bartfeld

**Professor,
Food Security Research &
Policy Specialist**

Bartfeld@wisc.edu

608-262-4765

Institute	Health & Well-Being
Primary Program	Healthy Eating & Active Living
Campus	School of Human Ecology

Dr. Bartfeld is a Food Security Research and Policy Specialist with UW-Extension. Her research focuses on patterns, causes, and consequences of food insecurity, and the role of food assistance programs in supporting vulnerable families. Her research spans national, state and local levels, and aims to inform lay audiences, policymakers, and researchers. In Extension, her role involves serving as a resource on food security for county and state colleagues; providing and synthesizing local data on food security and economic wellbeing; and supporting and conducting local and state research on food security and food assistance programs. She coordinates the Wisconsin Food Security Project, an interactive data and mapping portal providing local data related to food security, in partnership with the Applied Population Lab. In addition to serving as an Extension Specialist, Dr. Bartfeld is a Professor in the School of Human Ecology and an affiliate of the Institute of Research on Poverty.

Danielle Hairston-Green

Director, Human Development & Relationships

Brook Berg

Family Engagement &
Relationships Program Manager

Sara Richie

Life Span Program Manager

Jennifer Abel

Financial Security Outreach
Program Manager

Affiliated Campus-Based Centers

Center for Child and Family Wellbeing (School of Human Ecology)

Director: Larissa Duncan

Center for Financial Security (School of Human Ecology)

Director: Michael Collins



Danielle Hairston-Green

Institute Director

Danielle.Hairstongreen@wisc.edu

608-262-6287

Institute	Human Development & Relationships
Campus	Division of Extension
Education	Ph.D. Educational Leadership (Higher Education Administration) Prairie View A&M University M.A. Community Psychology & Social Change, Penn State University B.S. Criminal Justice, Penn State University

Danielle Y. Hairston-Green is currently the director for Human Development and Relationships Institute with the University of Wisconsin Division of Extension. Danielle’s most current research examines the frequency and level of distress associated with microaggression among students at a historically black university (HBCU) and the impact of food insecurity and homelessness among college students at an HBCU. Her most recent article approved for publication focuses on culturally responsive pedagogical practices used by white teachers in urban settings. Danielle has also worked as a statewide Extension specialist, project manager, adolescent health educator and prevention specialist with various private and public sectors. She holds a National Certification in human development and family studies.



Brook Berg

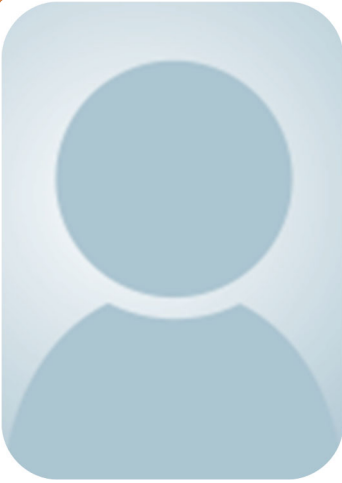
Family Engagements & Relationships Program Manager

brook.berg@wisc.edu

715-839-4712

Institute	Human Development & Relationships
Primary Program	Family Engagement & Relationships
Campus	Division of Extension
Education	B.S. Human Development and Family Studies, UW-Stout M.S. Education, UW-Stout

Brook Berg is an Outreach Program Manager for Family Engagement and Relationships, within the Institute of Human Development and Relationships. Prior to this role, she was an Associate Professor in the Department of Family Development and a Human Development and Relationships educator in Eau Claire County. She has focused her work around strengthening families through prevention and education. With an emphasis in social emotional development and parenting practices, she has taken a leadership role in building community capacity for the health and well-being of families and the communities they thrive in. Brook’s work on digital parenting education initiatives and the impact of family adversity on mental health have both been areas of research and impact. Brook has worked as the executive director of a multi-county non-profit organization, a technical college instructor, parent educator, home visitor and mental health specialist.



Mary Huser

Program Specialist

Mary.Huser@wisc.edu

608-265-3589

Institute	Human Development & Relationships
Primary Program	Family Engagement & Relationships
Campus	Division of Extension
Education	M.P.H., UW-La Crosse B.S., UW-Stout

Mary is a state program specialist on educational outreach to audiences affiliated with the correctional system with a focus on family support in re-entry and young children in justice-involved families. Based on the UW-Madison campus, Mary leads The Literacy Link project that connects children in justice-involved families to literacy-rich environments and experiences. Mary's work targets individual, family and community levels in preventing childhood adversity using evidence-based programs and principles. Mary joined Cooperative Extension in 1986 as a county educator and later became a statewide youth outreach educator. In 1995, under contract with the United States Army, Mary was a teen program specialist and worked to strengthen policies and practices on Army installations worldwide. Since 1996, Mary has served in Extension youth and family specialist roles.



Maggie Kerr

**Assistant Professor,
Vulnerable & Underserved
Young Children Specialist**

Margaret.Kerr@wisc.edu

608-890-4654

Institute	Human Development & Relationships
Primary Program	Family Engagement & Relationships
Campus	Division of Extension
Education	Ph.D. Positive Developmental Psychology, Claremont Graduate University

Margaret Kerr is a state specialist in Vulnerable and Underserved Young Children. Margaret is also an assistant professor in Human Development and Family Studies at the School of Human Ecology, UW-Madison. Margaret's research and outreach efforts are focused on promoting positive parent-child relationships and well-being in both children and parents/caregivers. Some of her projects include developing a curriculum that supports social emotional development in children, creating family-centered and literacy-rich visits for children of incarcerated parents, and supporting statewide co-parenting classes.



Peggy Olive

Financial Capability Specialist

Polive@wisc.edu

608-262-6766

Institute	Human Development & Relationships
Primary Program	Family Engagement & Relationships
Campus	Division of Extension
Education	M.S.W., UW-Milwaukee B.S. Social Welfare, UW-Milwaukee Professional Life Coaching Certificate, UW-Madison

As Financial Capability Specialist, Peggy holds a joint appointment with SoHE’s Center for Financial Security and with UW-Extension Cooperative Extension Family Living Programs. Prior to joining UW-Madison, she worked with UW-Extension providing community-based education, with a focus on financial coaching, counseling, and education for individuals and community partners. She has also worked as a therapist, home visitor, and collaborative services coordinator. In all of her previous positions, she has been privileged to talk with hundreds of people about their money – goals, fears, hopes, challenges. While her academic focus is to translate research from household finance and learning theories into financial education programs on the UW-Madison campus and statewide in partnership with UW-Extension, her purpose is to help people align their money with their values.



Anne Clarkson

**Digital Parenting Education
Outreach Specialist**

Anne.Clarkson@wisc.edu

608-206-6317

Primary Institute Affiliation	Human Development & Relationships
Program	Family Engagement & Relationships
Secondary Institute Affiliation	Health & Well-Being
Program	Healthy Eating & Active Living
Campus	Division of Extension
Education	Ph.D. Human Development and Family Studies, University of Wisconsin-Madison M.P.H Health Behavior Education, University of Minnesota

Anne Clarkson is the Digital Parenting Education outreach specialist for the Institute of Human Development and Relationships. Anne’s research and outreach have focused on the delivery of digital and online parenting, child development, and family relationship resources. She has utilized social media, text messaging, blogs, e-newsletters, and video for educational outreach. She provides state and national leadership on a variety of parent education and support projects. Previously, she worked in post-secondary education and in health behavior research.



Larissa Duncan

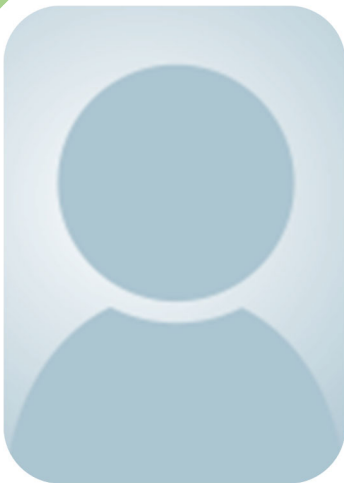
**Associate Professor,
Healthy Minds, Children &
Families Specialist**

Larissa.Duncan@wisc.edu

608-263-4026

Primary Institute Affiliation	Human Development & Relationships
Program	Family Engagement & Relationships
Secondary Institute Affiliation	Health & Well-Being
Program	Behavioral Health
Campus	School of Human Ecology

Larissa G. Duncan, Ph.D., is the Elizabeth C. Davies Chair in Child & Family Well-Being and Associate Professor of Human Development and Family Studies in the School of Human Ecology at the University of Wisconsin-Madison. She also holds appointments as the Healthy Minds, Children, and Families Specialist with UW-Extension and as an Associate Professor in the Department of Family Medicine and Community Health in the School of Medicine and Public Health. Dr. Duncan is the Faculty Director of the Center for Child and Family Well-Being and a faculty affiliate of the Center for Healthy Minds at UW-Madison. Dr. Duncan is internationally recognized for her development of a framework to promote and assess mindful parenting as well as her work to bring mindfulness and compassion training to pregnant women, children/adolescents, and families in school, community, and medical contexts. She is committed to working to improve the cultural relevance of these approaches to increase their impact in reducing racial/ethnic disparities in child and family well-being and advance health equity.



Robert Nix

**Associate Professor,
Diverse & Underserved
Children, Families &
Communities Specialist**

Robert.Nix@wisc.edu

608-890-3283

Primary Institute Affiliation	Human Development & Relationships
Program	Family Engagement & Relationships
Secondary Institute Affiliation	Health & Well-Being
Program	Behavioral Health
Campus	School of Human Ecology

NO BIO





Sara Richie

Life Span Program Manager

sara.richie@wisc.edu

715-479-3739

Institute	Human Development & Relationships
Primary Program	Life Span
Campus	Division of Extension
Education	M.A. Community Health Education, UW-La Crosse B.A. Family Life Education

Sara is the Outreach Program Manager for Life Span programming within the Institute of Human Development and Relationships. Previously, Sara was the Health & Well-Being Educator in Oneida, Vilas and Forest Counties. Some of her community efforts include programming in healthy aging, coalition building and leadership, and chronic disease prevention and management programs. Sara has assumed a number of leadership roles during her time at Extension, including within the Institute of Human Development and Relationships, as well as professional associations. Also, Sara has collaborated with colleagues to develop a facilitation guide to inform the work of Extension educators on creating aging-friendly communities. In addition to her experience with coordinating the efforts of local and statewide organizations, Sara has experience with project management and grant management including the Transform Wisconsin Grant (\$150,000) and The Communities Putting Prevention to Work Grant (\$2.3 million).



Kristin Litzelman

**Assistant Professor,
Family & Financial Well-Being
in Middle & Later Life
Specialist**

Litzelman@wisc.edu

608-262-3314

Primary Institute Affiliation	Human Development & Relationships
Program	Life Span
Secondary Institute Affiliation	Health & Well-Being
Program	Behavioral Health
Campus	School of Human Ecology

Dr. Litzelman's research broadly focuses on family caregiving and the impact of illness on families. She is interested in how caregivers are impacted by their role and how caregiver well-being impacts care recipients and other family members. A core part of Dr. Litzelman's outreach work is understanding and improving the ways that families access resources related to family caregiving - state and local resources for financial and logistical support, as well as knowledge and personal capacity through Extension programming. Within Extension, her core priority areas are to serve as a resource for county and state colleagues on issues related to aging; maximize educators' capacity to meet the needs of their communities by conducting, translating, and disseminating research and facilitating state and local partnerships; and collaborate with colleagues on projects that enhance family and community well-being in aging. Dr. Litzelman is the co-chair of the Aging Workgroup, an interdisciplinary group of Extension educators who are interested in aging-related programming. She serves as the faculty liaison to the UW-Madison Institute for Clinical and Translational Research, and is a member of the Wisconsin Family and Caregiver Support Alliance.

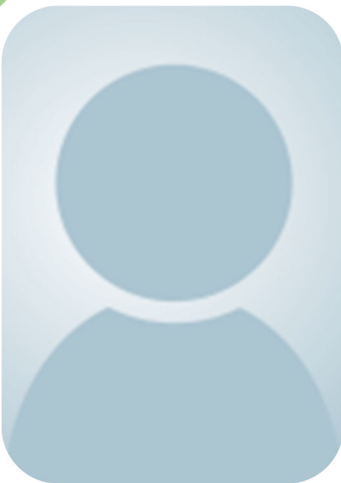


Jennifer Abel

**Financial Security Outreach
Program Manager**

Institute	Human Development & Relationships
Primary Program	Financial Security
Campus	Division of Extension
Education	M.A. Agricultural and Extension Education, Pennsylvania State University B.A. Russian and International Studies, Macalester College

Jenny joined the UW-Madison Division of Extension in January 2019 as AED for the Milwaukee County office. Before that, she spent 18 years with the Arlington office of Virginia Cooperative Extension (VCE) where she led personal finance, nutrition, and energy conservation education programs as a Family and Consumer Sciences Educator. Jenny is an Accredited Financial Counselor (AFC). As part of her financial education, work she co-led Extension's national involvement in the Consumer Financial Protection Bureau's Your Money, Your Goals cohort, co-led a statewide effort to standardize program evaluations and secured grants that made it possible to hire a 29 hour/week financial education program associate in the Arlington office. Jenny also secured funding that allowed two of her fellow educators and her to present VCE's youth financial simulation at three national conferences. In addition to securing more than \$500,000 in grants from private and public foundations.



J. Michael Collins

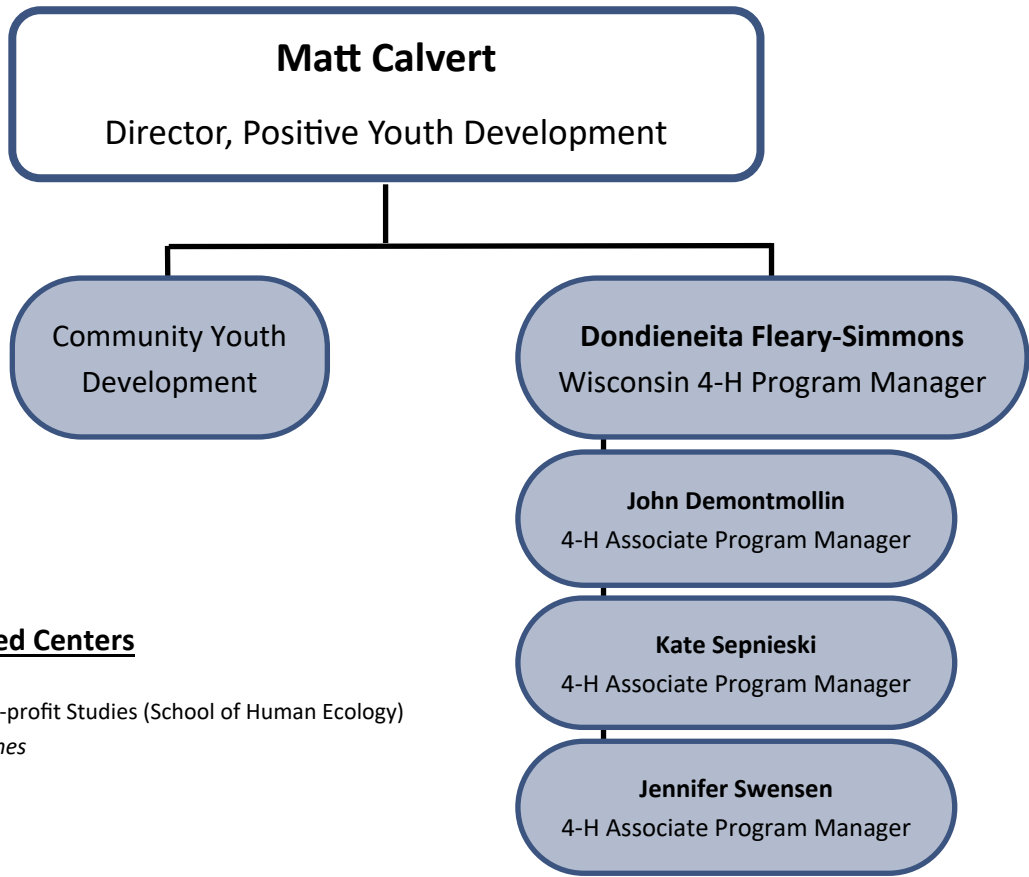
**Professor,
Family & Consumer Economics
Specialist**

JMCollins@wisc.edu

608-616-0369

Primary Institute Affiliation	Human Development & Relationships
Program	Financial Security
Secondary Institute Affiliation	Health & Well-Being
Program	Behavioral Health
Campus	School of Human Ecology
Education	Ph.D., Cornell University M.P.P., John F. Kennedy School of Government B.S., Miami University

J. Michael Collins is the faculty director of the Center for Financial Security and the Fetzer Family Chair in Consumer & Personal Finance in the School of Human Ecology. He is also a Professor at the La Follette School of Public Affairs, and an affiliate of the Institute for Research on Poverty and Center for Demography and Ecology. Collins studies consumer decision-making in the financial marketplace, including the consumer credit, savings and investment choices. His work includes the study of financial capability with a focus on low-income families. He is also the director of the UW-Madison Retirement and Disability Research Consortium (RDRC) for the Social Security Administration. Collins founded PolicyLab Consulting Group, a research consulting firm working with national foundations and government agencies, and co-founded SpringFour, an online database for local support services used in the financial industry. He also worked for NeighborWorks America (Neighborhood Reinvestment Corporation) and the Millennial Housing Commission.



Affiliated Campus-Based Centers

Center of Community and Non-profit Studies (School of Human Ecology)

Director: Brian McInnes



Matthew Calvert

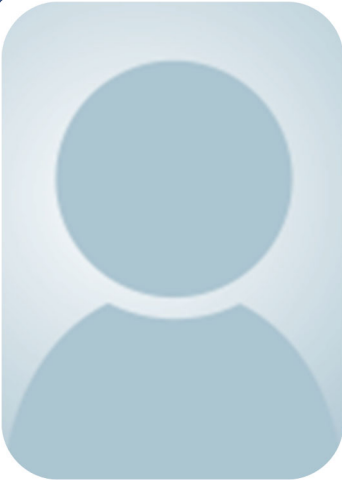
Institute Director

Matthew.Calvert@wisc.edu

608-262-1912

Institute	Positive Youth Development
Campus	Division of Extension
Education	Ph.D. Educational Policy Studies, UW-Madison A.B. International Relations, Stanford University

Matt Calvert is director of the Institute of Positive Youth Development at the UW-Madison Division of Extension. He provides leadership for Wisconsin 4-H and Community Youth Development programs. Matt is on leave from his faculty position as professor in the Extension Department of Youth Development, where he focused on youth civic engagement and community youth development programs.



Liz Jesse

Science Outreach Specialist

ejesse2@wisc.edu

608-265-2019

Institute	Positive Youth Development
Primary Program	Community Youth Development
Campus	Biotech
Education	M.A. Secondary Education, University of Maryland-University College B.S. Bacteriology, University of Wisconsin-Madison

Elizabeth (Liz) Jesse is a Science Outreach Specialist at the UW Biotechnology Center. Liz worked as a middle and high school classroom teacher for ten years, at both public and public charter schools in the Sheboygan Area. She also has experience working in the private sector as a pharmaceutical lab technician. Liz’s outreach focuses on designing and implementing curriculum for biology and chemistry workshops for the public; with an emphasis on K-12 students. Liz is an active member of the UW Madison Science Alliance group; she is also on the planning committee for the Science Expeditions campus open house and the Madison Expanding Your Horizons girls STEM conference.



Joseph Mullenberg

Educational Outreach Program Specialist

Joe.Mullenberg@wisc.edu

Institute	Positive Youth Development
Primary Program	Community Youth Development
Campus	Division of Extension
Education	Psychology; Spanish, University of Wisconsin–Eau Claire

Joe Muellenberg works in the Community Youth Development program and Horticulture program at the University of Wisconsin Division of Extension in Dane County. He has experience working with the Wisconsin Nutrition Education program (FoodWise) as well as the 4-H program and currently works in the community to provide horticulture education to youth and adults. With a focus on positive youth development, he collaborates with local organizations and other Extension staff to bring outdoor education to at-risk youth and marginalized populations. Joe also supports the 4-H Program, Master Gardener volunteer training, Green Thumb Gardening Series, Master Composter training, Dane County Sweet Potato Project, Real Colors training, and other community-based projects.



Monica Lobenstein

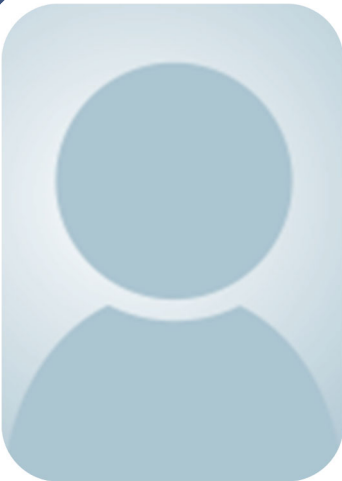
Learning Resources Specialist

Monica.Lobenstein@wisc.edu

715-896-0377

Primary Institute Affiliation	Positive Youth Development
Program	Community Youth Development
Secondary Institute Affiliation	Health & Well-Being
Program	Behavioral Health
Campus	Division of Extension
Education	M.A. English

Monica Lobenstein is the Learning Resources Specialist for Positive Youth Development at UW-Madison's Division of Extension. In this role, she supports educators and partners in reviewing, planning, and developing high quality learning resources, including traditional curriculum, online learning modules, websites, video, audio and more. She leads through planning and idea development, project management, writing and editing support, and creative problem solving strategies. During her career working with youth and adults, Monica has supported programs in youth development, afterschool, substance abuse prevention, outdoor education, and curriculum development. She has placed special emphasis on learning and teaching about mental health and personal well-being. Prior to her current role, she served as the 4-H Youth Development agent in Jackson County and as an interim curriculum & instructional design specialist. She holds a number of certifications in teaching about mindfulness and well-being, including being a Wisconsin Master Trainer for the Taking Care of You program, as well as facilitator for the following programs: Mindfulness-Enhanced Strengthening Families Program, Question Persuade Refer Suicide Intervention Skills, Raising a Thinking Child, Real Colors, Learning to BREATHE, and Powerful Tools for Caregivers.



Dondieneita Fleary-Simmons

Program Manager

flearysimmons@wisc.edu

608-265-9788

Institute	Positive Youth Development
Primary Program	Wisconsin 4-H
Campus	Division of Extension

I am writing to introduce myself as the new 4-H program manager at the UW-Madison Division of Extension. This position combines my passion for providing promotive opportunities for youth, families and communities with my experience managing programs and people and in optimizing systems. I've spent most of my career in Child Welfare including serving as the inaugural Bureau Director of placement and out of home care at Wisconsin's Department of Children and Families and over a decade as the Illinois State Manager responsible for redesigning youth programming to provide emerging adults with the skills and supportive connections needed to thrive. Outside of Child Welfare, I directed an array of programs with Goodman Community Center in Madison, served as an adjunct instructor here at UW-Madison in both the Human Development & Family Studies program and the School of Social Work, and managed City-Wide community-engaged STEaM efforts in Chicago in roles at the Museum of Science & Industry and the Chicago Urban League.

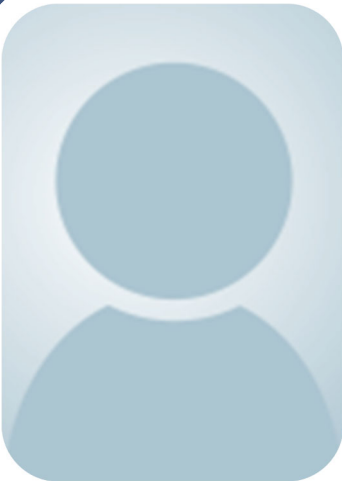


John de Montmollin

4-H Associate Program Manager
john.demontmollin@wisc.edu

Institute	Positive Youth Development
Primary Program	Wisconsin 4-H
Campus	Division of Extension

NO BIO



Kate Sepnieski

4-H Associate Program Manager
sepnieski@wisc.edu
608-262-0491

Institute	Positive Youth Development
Primary Program	Wisconsin 4-H
Campus	Division of Extension

NO BIO





Jennifer Swensen

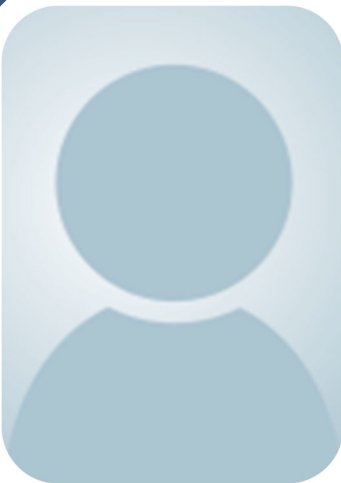
4-H Associate Program Manager

Jennifer.swensen@wisc.edu

715-421-8448

Institute	Positive Youth Development
Primary Program	Wisconsin 4-H
Campus	Division of Extension
Education	M.E., Strayer University B.S. Business Communication, UW-River Falls

Jennifer Swensen is an associate professor in the Department of Youth Development. Jennifer works as the 4-H Youth Development Educator focusing on two areas: 1) building adult capacity within the community that results in an environment that promotes positive youth development, and 2) youth will build life skills to engage in and fulfill leadership opportunities. Jennifer has been involved in several statewide volunteer development initiatives including co-developing the Extension Mandated Reporter training for volunteers and co-authoring the Wisconsin 4-H Essential Elements online learning modules. Jennifer has worked as the Department head and in management at a nonprofit youth development organization focusing on volunteer development and membership. She also served on the 4-H Foundational Topics Team which determined the areas of focus for Wisconsin 4-H.



Amber Rehberg

Educational Program Specialist

Amber.Rehberg@wisc.edu

608-262-1557

Institute	Positive Youth Development
Primary Program	Wisconsin 4-H
Campus	Division of Extension
Education	M.A. Educational Leaderships, Concordia University

Amber Rehberg is the WI 4-H educational program specialist and is responsible for providing leadership and support for state, national and international educational experiences. Prior to this role, Amber was the Price County 4-H Youth Development Educator and Department Head. She also served as a 4-H program coordinator in Sheboygan County and Lincoln County. Amber is committed to expanding access to underserved youth and families and has extensive experience with overnight educational experiences. Youth and adult partnerships are foundational to Amber's work and are modeled in the Wisconsin 4-H Leadership Council where she is one of the staff advisors.



Douglas Thompson

**4-H Shooting Sports
Coordinator**

Douglas.Thompson@wisc.edu

920-391-4310

Institute	Positive Youth Development
Primary Program	Wisconsin 4-H
Campus	Division of Extension

Doug Thompson is the statewide coordinator for 4-H shooting sports. The 4-H Shooting Sports program is national in scope and Doug works with the Wisconsin 4-H Shooting Sports Committee to insure national mandates are followed in the delivery of statewide certification workshops. He also provides leadership to over thirty adults who represent the State Training Team of instructors that deliver discipline training for certification workshops. Doug has also worked in Illinois, Iowa and Wisconsin with responsibilities in county 4-H programming. He values the commitment of 4-H volunteers who give to the program and is committed to creating efficient training methods respective of volunteers' time.



Joanna Skluzacek

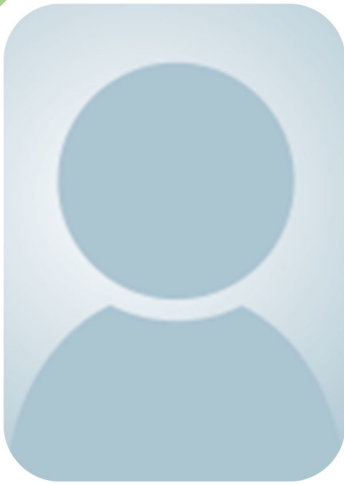
**Associate Professor,
4-H STEM Specialist**

Joanna.Skluzacek@wisc.edu

608-265-2949

Primary Institute Affiliation	Positive Youth Development
Program	Wisconsin 4-H
Secondary Institute Affiliation	Community Development
Program	Community Economic
Campus	Division of Extension
Education	Ph.D. Environmental Chemistry and Technology, UW-Madison B.S. Environmental Studies, Minnesota State University-Mankato

Joanna Skluzacek is an associate professor and 4-H STEM specialist in the Institute of Positive Youth Development for Extension. In this role, Joanna supports statewide youth programming in STEM through grant and curriculum writing while providing professional development opportunities to educators. Joanna has had professional training in inquiry-based education and implementation of science education in the Milwaukee Public School district. Previously, Joanna was a post-doctoral fellow from Penn State University as an education and outreach coordinator for the Center for Nanoscale Science (CNS) and researcher in the Department of Chemistry.



Thomas Zinnen

Biotechnology Education Specialist

Zinnen@Biotech.edu

608-265-2420

Primary Institute Affiliation	Positive Youth Development
Program	Community Youth Development
Secondary Institute Affiliation	Health & Well-Being
Program	Life Span
Campus	Division of Extension
Education	Ph.D. Plant Pathology, UW-Madison M.S. Plant Pathology, University of Illinois, Urbana-Champaign B.S. Biology, UW-Platteville

Tom Zinnen is a Biotechnology Specialist with the Biotechnology Center and the Division of Extension. He previously worked from 1985 to 1986 at Agrigenetics in Madison and from 1986 to 1991 at Northern Illinois University in DeKalb before returning to UW-Madison/Extension in 1991. Zinnen welcomes visitors for hands-on learning experiences in the Outreach Labs at the Biotechnology Center and across the UW-Madison campus, organizes the weekly Wednesday Nite @ The Lab public science series that also appears on Wisconsin Public Television's University Place, and supports science experiences for 4H members and other youth across Wisconsin. He was a Congressional Science Fellow in 200-2001 and served as a speechwriter for the director of the National Science Foundation in 2008-2010.



Kandi O'Neil

Volunteer Specialist

Kandi.ONeil@wisc.edu

608-262-2050


Institute	Positive Youth Development
Campus	Division of Extension

NO BIO



For Additional Specialists, see:

- Alissa Grenawalt (Agriculture)
- Justin Hougham (Natural Resources)
- Scott Hygnstrom (Natural Resources)
- Ronald Kean (Agriculture)
- Bernadette O'Rourke (Agriculture)



Secondary Affiliation
with YFCD



Julie Dawson

Horticulture Educator

Julie.Dawson@wisc.edu

608-609-6195

Primary Institute Affiliation	Agriculture
Program	Horticulture
Secondary Institute Affiliation	Community Development
Program	Community Food Systems
Campus	College of Agriculture & Life Science
Education	Ph.D Crop Science, Washington State University

Julie Dawson is an assistant professor of horticulture at the University of Wisconsin-Madison. She is the first UW-Madison plant scientist hired to specialize in urban and peri-urban agriculture, and focuses on the needs of Wisconsin's small, diversified, direct-to-market farms, including those located in and around urban areas that sell their produce at local farmers' markets, restaurants and grocery stores, and through community supported agriculture shares. Her program also supports the state's community gardens, particularly those in urban areas where residents have limited access to good-quality, fresh produce. Her work takes into account the whole food system, including growing, processing, storing, distributing, transporting and selling.



Alissa Grenawalt

Animal Sciences Outreach Specialist

AGrenawalt@wisc.edu

608-890-0432

Primary Institute Affiliation	Agriculture
Program	Livestock
Secondary Institute Affiliation	Positive Youth Development
Program	Wisconsin 4-H
Campus	College of Agriculture & Life Science
Education	M.S. Agricultural Industries, UW-Platteville B.S. Animal Science, UW-Platteville

Alissa Grenawalt serves as the Extension outreach specialist in the College of Agriculture and Life Sciences at UW-Madison within the Department of Animal Sciences and Extension. Alissa supports the current specialists in the areas of youth livestock, horse, poultry and meats helping to organize programs and events throughout the year as well as managing content websites and social media channels. Previously, Alissa spent 12 years as the Green County 4-H and Youth Development agent.



Anna Haines

Center Director, Professor

ALHaines@wisc.edu

715-346-2386

Primary Institute	Natural Resources
Program	Land & Water
Secondary Institute Affiliation	Community Development
Program	Community Economic Development
Campus	Division of Extension
Education	Ph.D. Urban and Regional Planning, University of Wisconsin-Madison

Anna Haines is a professor in the College of Natural Resources at the University of Wisconsin - Stevens Point and a land use and community development specialist with the University of Wisconsin-Extension. Her research and teaching focuses on planning and community development from a natural resources or environmental perspective. Her research has focused on factors that influenced land division in amenity-rich areas of Wisconsin, understanding how zoning codes affect future build out scenarios, sustainable zoning, and local food clusters. Her extension work has focused on comprehensive planning and planning implementation tools and techniques, sustainable communities, and property rights issues.



Justin Hougham

Upham Woods Outdoor Learning

Center Director

Environmental Education Specialist

Justin.Hougham@wisc.edu

Primary Institute Affiliation	Natural Resources
Program	Upham Woods Outdoor Learning Center
Secondary Institute Affiliation	Positive Youth Development
Program	Community Youth Development
Campus	Division of Extension
Education	Ph.D. Sustainability Education and Natural Resources, Washington State University M.S. Education, Washington State University B.S. Cognitive Science, Indiana University

Dr. Justin Hougham is an assistant professor and director of Upham Woods for Extension where he supports the delivery of a wide range of science education topics to K-12 students, graduate students, and in-service teachers. Justin's scholarship is in the areas of place-based pedagogies, STEM education, and education for sustainability. Justin has taught 17 different undergraduate and graduate courses as well as instructed over 1000 days in the field. He continues to teach courses, clinics, and trainings that develop pedagogies in experiential education.



Brent Hueth

Director, UW Center for Cooperatives

Hueth@wisc.edu

608-890-0924

Primary Institute Affiliation	Agriculture
Program	Livestock
Secondary Institute Affiliation	Community Development
Program	Community Economic Development
Campus	College of Agriculture & Life Sciences
Education	Ph.D. Agricultural and Natural Resource Economics, University of Maryland at College Park

Brent Hueth is an associate professor in the Department of Agricultural & Applied Economics at the University of Wisconsin-Madison, as well as the director for the UW Center for Cooperatives. His teaching focuses on cooperative organizations, agricultural markets, and applied microeconomics. Brent is currently leading research projects on cooperative governance, behavior, and performance, and on the economic impact of cooperatives on the U.S. economy. Other recent research topics have included incentive pay for CEOs in cooperative firms; cooperative conversions, failures and restructurings; and the role of the cooperative bargaining association. His research has been published by the American Journal of Agricultural Economics, the Journal of Economic Behavior and Organization, and the Journal of Regulatory Economics, among others.



Scott Hygnstrom

Wildlife Specialist

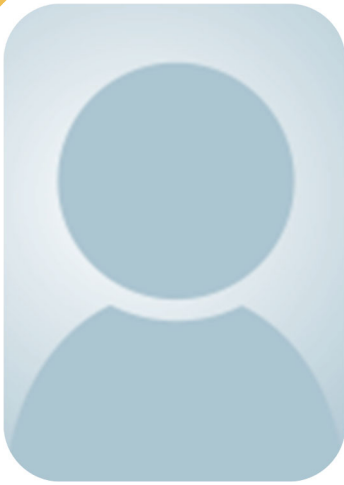
SHygnstro@uwsp.edu

715-346-2301

Primary Institute Affiliation	Natural Resources
Program	Land & Water
Secondary Institute Affiliation	Positive Youth Development
Program	Wisconsin 4-H
Campus	Division of Extension

NO BIO





Shiba Kar

Sustainable Energy Specialist

Shiba.Kar@wisc.edu

715-346-2359

Primary Institute Affiliation	Natural Resources
Program	Land & Water
Secondary Institute Affiliation	Community Development
Program	Community Economic Development
Campus	Center for Land Use Education

NO BIO



Ronald Kean

Poultry Specialist

RPKean@wisc.edu

608-262-8807

Primary Institute Affiliation	Agriculture
Program	Livestock
Secondary Institute Affiliation	Positive Youth Development
Program	Wisconsin 4-H
Campus	College of Agriculture & Life Science
Education	M.S., Iowa State University B.S., University of Nebraska

Ron Kean is the poultry specialist for the University of Wisconsin Division of Extension. He is also a faculty associate in the Department of Animal Sciences at UW-Madison. His outreach covers all aspects of poultry, from urban and small farm flocks to commercial farms. He works with youth poultry projects as well as adults interested in poultry production.



Lynn Markham

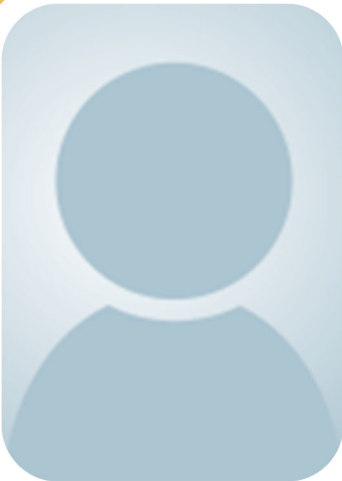
**Shoreland & Land Use
Specialist**

Lynn.Markham@wisc.edu

715-346-3879

Primary Institute Affiliation	Natural Resources
Program	Land & Water
Secondary Institute Affiliation	Community Development
Program	Community Economic Development
Campus	Division of Extension

Lynn Markham is a Land Use Specialist at the Center for Land Use Education. Her work has focuses on land use tools and techniques to protect drinking water, lakes and streams; zoning and boards of adjustment/appeals; and sustainable communities. To assist communities, Lynn provides research-based information, policy options and community case studies. Her recent projects have included publications about protecting waterfront investments and lakes, two children's books about lakes and shoreland areas, and zoning board workshops.



David Marcouiller

**Professor,
Resource Economist**

Dave.Marcouiller@wisc.edu

608-262-2998

Primary Institute Affiliation	Natural Resources
Program	Land & Water
Secondary Institute	Community Development
Program	Community Economic Development
Campus	College of Letters & Sciences

NO BIO





Scott Sanford

**Rural Energy Program
Outreach Specialist**
SASanford@wisc.edu
608-262-5062

Primary Institute Affiliation	Agriculture
Program	Farm Management
Secondary Institute Affiliation	Community Development
Program	Community Economic Development
Campus	Division of Extension
Education	M.E. Agricultural Engineering, Cornell University

Scott Sanford is a distinguished Outreach Specialist/Extension Agricultural Engineer in the Department of Biological Systems Engineering at UW-Madison, where he has managed the Rural Energy Program since 2002. He provides programming on energy related issues for irrigation management, dairy farms, greenhouses, crop storage (vegetables and grains), maple syrup production, mint distillation, grain drying, and renewable energy including wood energy. He is a member of the Wisconsin State Wood Energy Team. He is also involved with a research team working on harvesting and processing of hazelnuts as part of a project to develop hazelnut production in the Midwest. He has authored 27 Extension bulletins on a wide variety of energy related topics with nine publications being awarded an ASABE Blue Ribbon award for Educational Aids.



Brett Shaw

**Professor,
Environmental Communication
Specialist**
BRShaw@wisc.edu
608-890-1878

Primary Institute Affiliation	Natural Resources
Program	Land & Water
Secondary Institute Affiliation	Community Development
Program	Community Food Systems
Campus	Division of Extension
Education	Ph.D Mass Communications, UW-Madison

Bret Shaw is an associate professor in the Department of Life Sciences Communication at the University of Wisconsin-Madison. He focuses on planning and evaluating social marketing campaigns dealing with behavior change for a variety of natural resource management issues such as protecting water quality, preventing the spread of invasive species and promoting sustainable land management behaviors. He also has conducted significant research programs related to promoting local food systems in Wisconsin. Bret has published broadly in the areas of environmental and health communication, and has worked in marketing, advertising, technology and journalism.



John Shutske

**Agricultural Safety & Health
Specialist-Biological Systems
Engineering**

John.Shutske@wisc.edu

608-890-2949

Primary Institute	Agriculture
Program	Farm Management
Secondary Institute Affiliation	Health & Well-Being
Program	Behavioral Health
Campus	College of Agriculture & Life Science
Education	Ph.D., Purdue University

John Shutske is a professor and Biological Systems Engineering specialist. John focuses on agricultural safety and health promotion for farmers, family members and workers and also studies digital technology innovation in rural areas including internet and information-based systems (automation, sensors, etc.) that can improve efficiency, safety and communication. John's Extension leadership activities since 1985 have promoted adoption of safe design of processes and machines through engineering; design of safety-related technologies; worker education; and, risk management. This work also includes a focus on health concerns that impact farmer and public health including respiratory hazard protection; human health risk associated with antibiotic resistance; and, health impacts of chronic stress. John holds an affiliate faculty appointment in the School of Medicine and Public Health. He also spent 18 years as a specialist at the University of Minnesota and spent several years working in loss control and community education with the Illinois Farm Bureau.



Bernadette O'Rourke

**Youth Livestock Extension
Specialist**

BORourke2@ansciwisc.edu

608-263-4304

Primary Institute Affiliation	Agriculture
Program	Livestock
Secondary Institute	Positive Youth Development
Program	Wisconsin 4-H
Campus	College of Agriculture & Life Science

Bernie O'Rourke is an Extension Youth Livestock Specialist, whose position is housed in the Department of Animal Sciences and the University of Wisconsin-Madison. Her expertise is in beef, sheep, swine, meat goats, and meat science. Her position priorities are to partner with 4-H, FFA, and other commodity groups to deliver high-quality, needed programs, to lead the Meat Animal Quality Assurance (MAQA) program that reaches roughly 4500 youths each year, to provide programs around Ag advocacy and Ag literacy, and much, much more!