



youth + communities

University of Wisconsin - Extension

EMPOWERING

youth

TRANSFORMING

communities



Neil Klemme, UWEX-Iron County Community Youth Development Educator

Todd Johnson, UWRF-Land Use + Community Development Specialist





Hurley

POP 1,547

Context





Response: Youth-Led Placemaking

- Outputs: youth-led planning & design process
- Outcomes: community engagement & youth leadership



Process: Youth-Led Community Design Charrette

- Charrette:
 - Site Tours
 - Vision Sketch
 - Design Alternatives
 - Presentation
- Summary Report
- Implementation



youth + communities

University of Wisconsin - Extension

Charrette: Site Tours



youth + communities

University of Wisconsin - Extension

Charrette: Vision Sketch



Charrette: Design Alternatives





Charrette: Design Alternatives



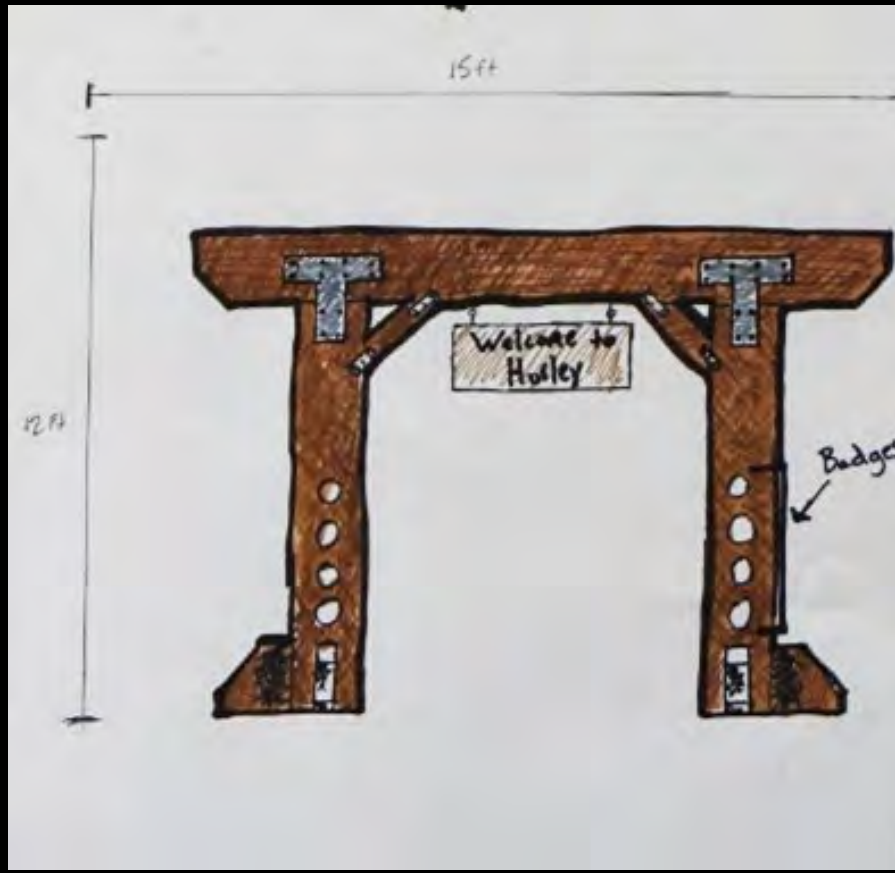


Charrette: Design Alternatives





Charrette: Design Alternatives





youth + communities

University of Wisconsin - Extension

Charrette: Presentation

Outcomes: Iron County Regional Trail Committee



"The youth working with professional landscape architects created a very impressive and very real design product. It was amazing how quickly they organized community input into something that was creative and feasible."

- Iron County Regional Trail Committee Co-Chairs



Outcomes: Iron County Regional Trail



"Sometimes we need a fresh set of eyes so we can see our own community in a new and exciting way." - Will Andresen, Iron County

Outcomes: Social Capital

"By creating places for youth in community, like the Design Charrette, we are providing opportunities to develop social capital and allowing our community to see youth as part of the solution rather than as the problem."

-Neil Klemme, Iron County 4-H Educator





communities
ion

Why Youth & Community Development?

Successful youth development efforts involve participating in and contributing to the wider community.

Recent research on successful community change and sustainable community development identifies youth engagement as a critical element in the process.





Communities Spiral Up

Youth and adults develop new ways of thinking about the importance of youth as a community resource.



The Community project develops bridging social capital between the youth group and community organizations.



Youth develop partnerships with other groups to complete the project.



Youth identify projects that impact the common good.



Youth develop bonding social capital working on a project together and build trust among them.



Youth on the County Board, committees, community boards, youth and adults work collaboratively for community change.



Community Design Charrette, youth worked side by side with adults from a local non motorized trail committee to develop design for trail/trailhead.



Youth First Impressions, youth worked independently to provide feedback to a partnering community looking for change.



Mercer High School students worked to create promotional materials that had an impact on tourism in Iron County.



The Iron County Summer Camp Planning Team develops camp program and assists Camp Director with counselor selection.



youth + communities

University of Wisconsin - Extension

Outcomes: Design Wisconsin Program

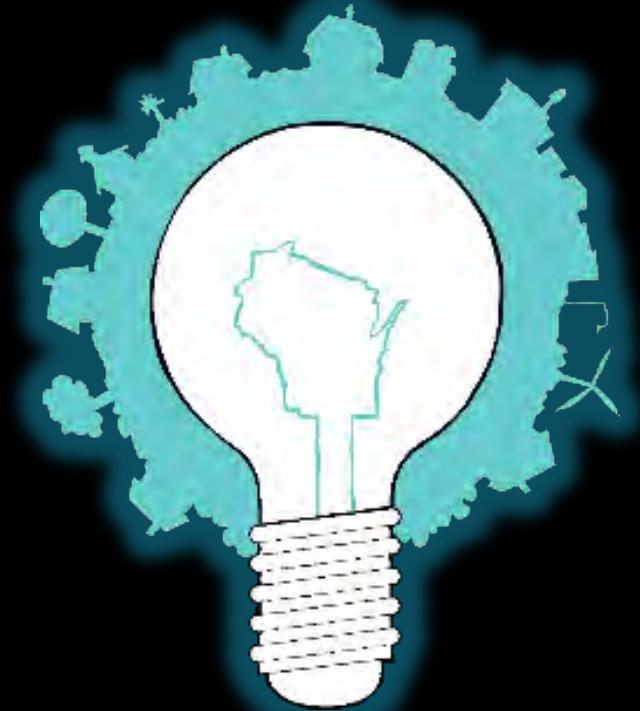


youth + communities

University of Wisconsin - Extension

Neil Klemme
neil.klemme@ces.uwex.edu

Todd Johnson
todd.johnson@uwrf.edu



<https://blogs.ces.uwex.edu/community>