

# Learning from the local situation

Jenna Klink, Nathaniel Shay, Christian Schmieder, Kyrie Caldwell

Contributors: Jen Kushner

# Developmental Situational Analysis



# Developmental Situational Analysis



# DSA Part 1 – Goals, Leaders, Participants

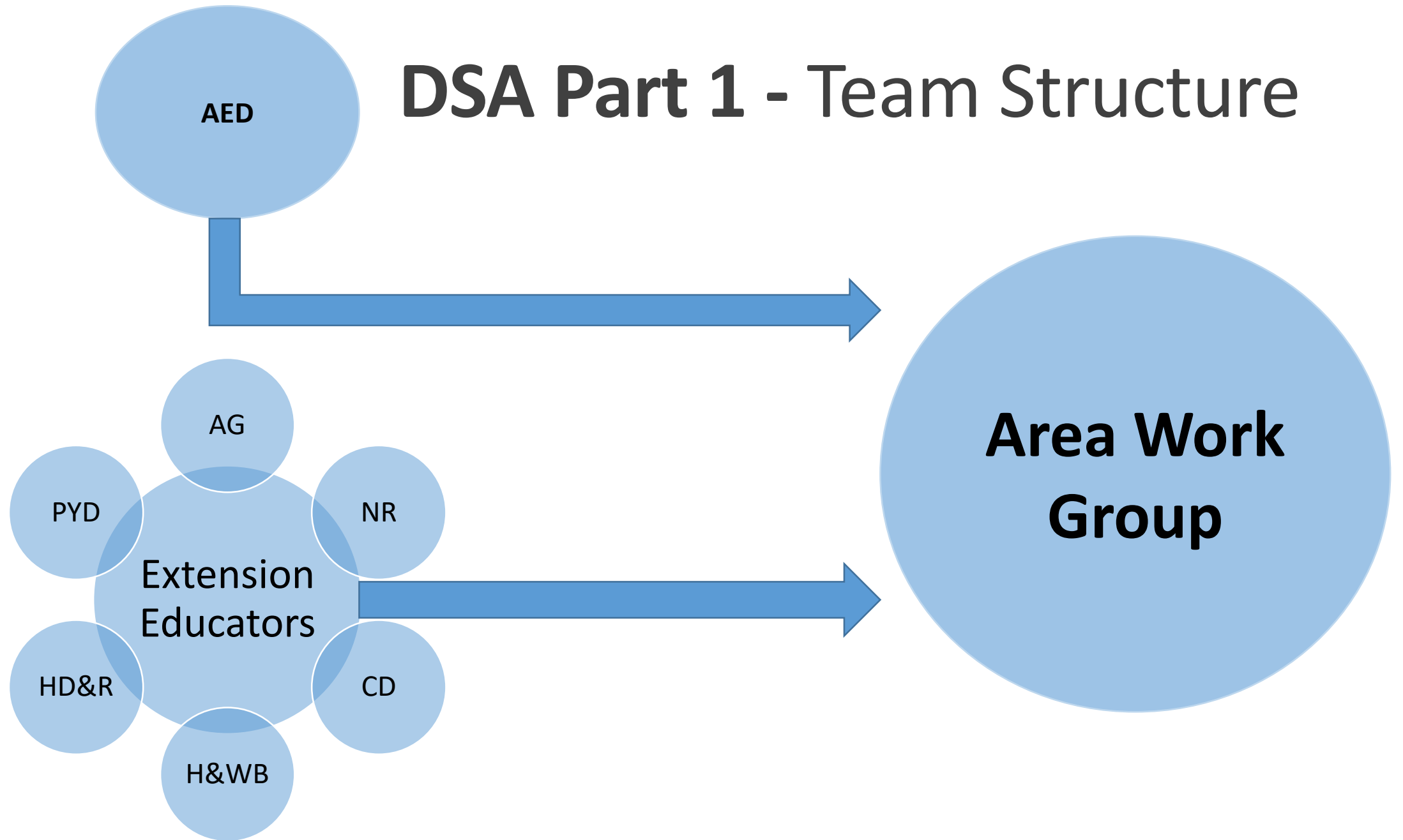
**We are here**



Products

Products

# DSA Part 1 - Team Structure

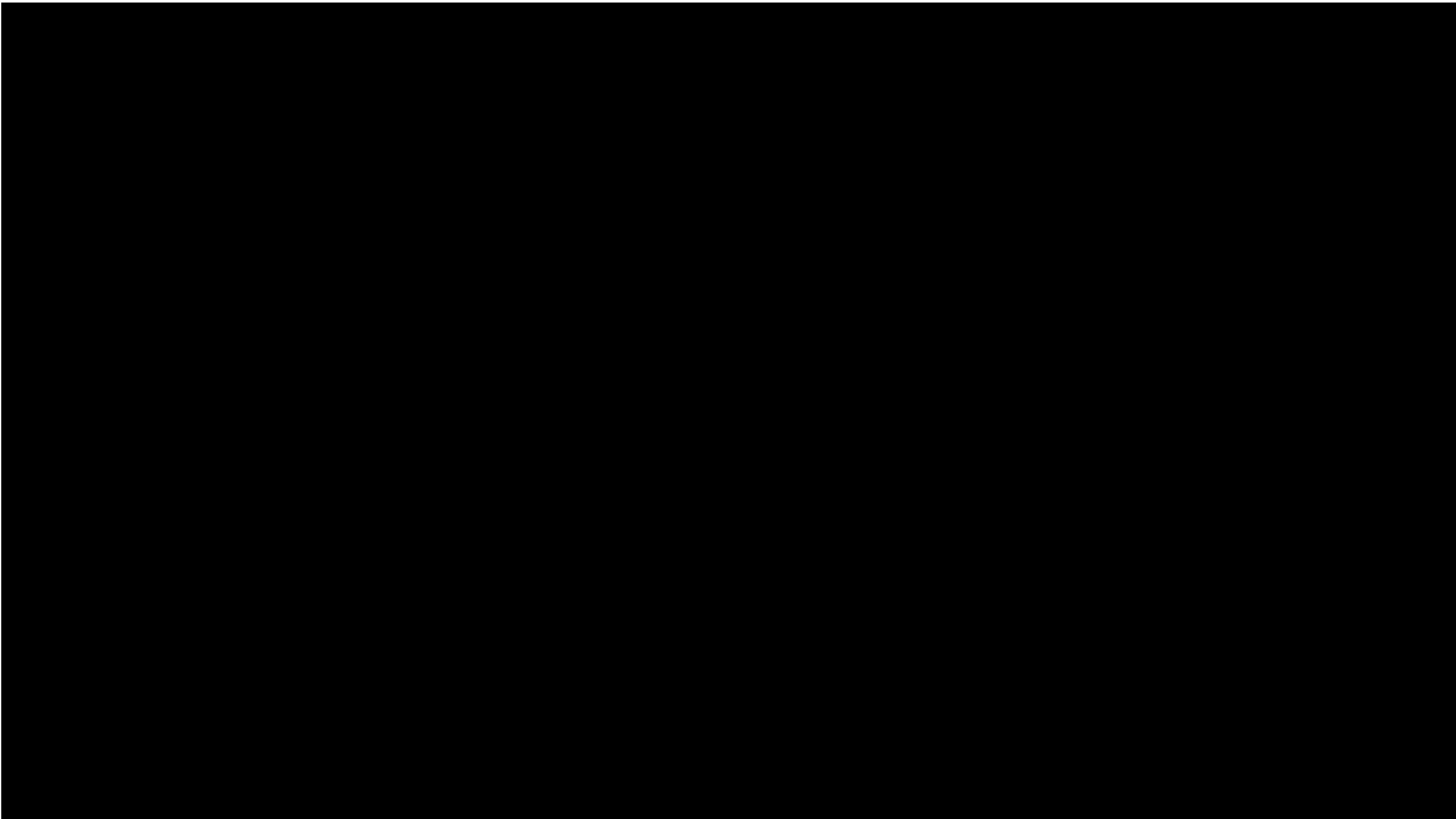


# Recognition

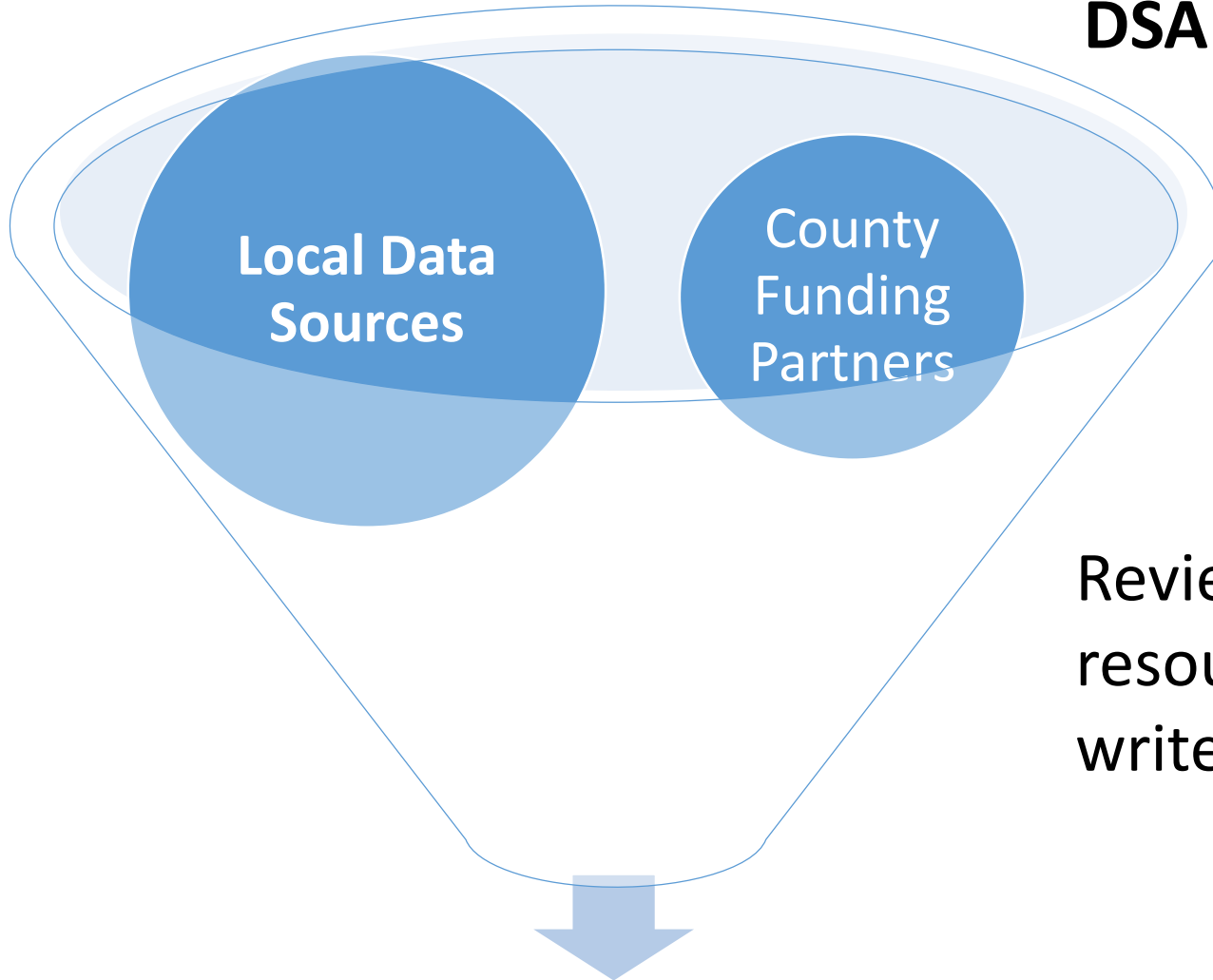
---

AA1B000001-7237-8C51-1P89-13L1-B2N5





## DSA Part 1 – Components & Deliverables



Reviewed 500+  
resources to  
write reports

- 22 Area Reports from Area Work Groups
- Results Report from Office of Program Support Services



# DSA Part 1 – Findings Exercise

## Instructions

- Turn to page 3 of your DSA handout – the colorful one
- We will go through the five themes one by one
  - For each, pick one issue and turn to your partner to discuss the following
  - Program Support Services will “Model” the style of discussion for you prior to the activity.

## **What does this issue mean from your perspective?**

What do you see? What do you hear about it? What do you know about it? What do you do about it (if applicable)?

# Theme – Workforce & Workplace Development

Definition of Issues	Shorthand Issues
<u><i>Work and working are not viable enough.</i></u>	<u><i>Workforce &amp; Workplace Development</i></u>
There are not enough people to fill jobs.	Workforce Shortage
Jobs do not pay enough to make them financially feasible.	Insufficient Wages/Low Income Rate
Tight profit margins and changing operational environment limit farms' fiscal viability.	Farm Viability and Sustainability

# Theme – Workforce & Workplace Development

**What does this issue  
mean from your  
perspective? (Pick one)**

**What do you see? What do you hear about it? What do you know about it? What do you do about it (if applicable)?**

# Theme – Workforce & Workplace Development

## Issues Mentioned By the Most Work Groups

There are not enough people to fill jobs.

Tight profit margins and changing operational environment limit farms' fiscal viability.

# Theme – Population Health

Definition of Issues	Shorthand Issues
<u><i>Our residents experience significant mental and physical health challenges related to access, trauma, behaviors, and exposures.</i></u>	<u><i>Population Health</i></u>
Residents have limited access to health necessities.	Limited Access to Health Necessities
Many residents do not have appropriate resources to prevent, manage, and heal chronic and ongoing health issues.	Chronic and Ongoing Health Issues
Many residents suffer from the effects of traumatic experiences.	Trauma
Residents suffer from high rates of alcohol and drug use/abuse and mental health conditions.	AODA & Mental Health
Residents are exposed to dangerous environmental toxins via homes, water, and air.	Environmental Health

**Theme – Population Health**

**What does this issue  
mean from your  
perspective? (Pick one)**

**What do you see? What do you hear about it? What do you know about it? What do you do about it (if applicable)?**

# Theme – Population Health

## Issues Mentioned By the Most Work Groups

Residents have limited access to health necessities.

Residents suffer from high rates of alcohol and drug use/abuse and mental health conditions.

# Theme – Infrastructure

Definition of Issues	Shorthand Issues
<u><i>Our infrastructure does not serve Wisconsin residents enough.</i></u>	<u><i>Infrastructure</i></u>
Transportation is too expensive, failing or unavailable.	Transportation
The housing market does not serve all of the population enough.	Housing
Access to high-speed internet is limited in some areas.	Broadband



Key Topic – Infrastructure

**What does this issue  
mean from your  
perspective? (Pick one)**

**What do you see? What do you hear about it? What do you know about it? What do you do about it (if applicable)?**

# Theme – Infrastructure

## Issues Mentioned By the Most Work Groups

Transportation is too expensive, failing or unavailable.

The housing market does not serve all of the population enough.

# Theme – Environment & Stewardship

Definition of Issues	Shorthand Issues
<u><i>Our environment needs protective management balanced with economic productivity.</i></u>	<u><i>Environment &amp; Stewardship</i></u>
Communities primarily supported with natural resource economies need to protect resources while providing for sustainable livelihoods.	Natural Resource Economies
Water quality is poor and causing various health, environmental and economic problems.	Poor Water Quality
Private forested lands lack management and farm land requires conservation practices.	Land Stewardship

## **Theme – Environment & Stewardship**

**What does this issue  
mean from your  
perspective? (Pick one)**

**What do you see? What do you hear about it? What do you know about it? What do you do about it (if applicable)?**

# Theme – Environment & Stewardship

## Issue Mentioned By the Most Work Groups

Water quality is poor and causing various health, environmental and economic problems.

# Key Theme – Social Infrastructure & Systems

Definition of Issues	Shorthand
<u>Our current social systems are not equitable to all residents, which can disadvantage individuals' and groups' abilities to lead full, productive lives.</u>	<u>Social Infrastructure &amp; Systems</u>
Residents that have not had full access to education need the skills and content that help them navigate through social systems.	Life Skills
Violence and the threat of violence sometimes causes and sometimes stems from distress in communities; this distress has or can become intergenerational and/or historical trauma.	Violence and Aggression
Organizations that provide public services lack the resources needed to provide adequate and equitable services to communities.	Limited Capacity of Organizations
People must individually navigate, interact with, cope with, and/or adapt to inequitable or otherwise difficult social systems and situations, and many require support in doing so.	Ways to Interact, Cope, Adapt
Misperceptions and misunderstandings between groups can hinder efforts to collectively solve shared problems.	Social Cohesion

**Theme – Social Infrastructure & Systems**

**What does this issue  
mean from your  
perspective? (Pick one)**

**What do you see? What do you hear about it? What do you know about it? What do you do about it (if applicable)?**

# Key Theme – Social Infrastructure & Systems

## Issues Mentioned By the Most Work Groups

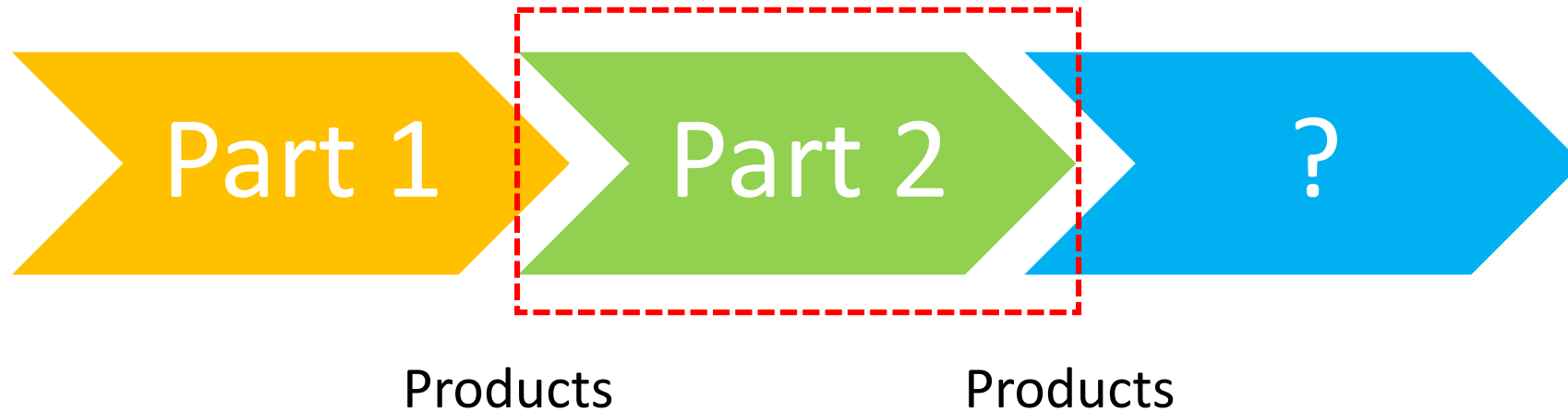
Organizations that provide public services lack the resources needed to provide adequate and equitable services to communities.

Misperceptions and misunderstandings between groups can hinder efforts to collectively solve shared problems.

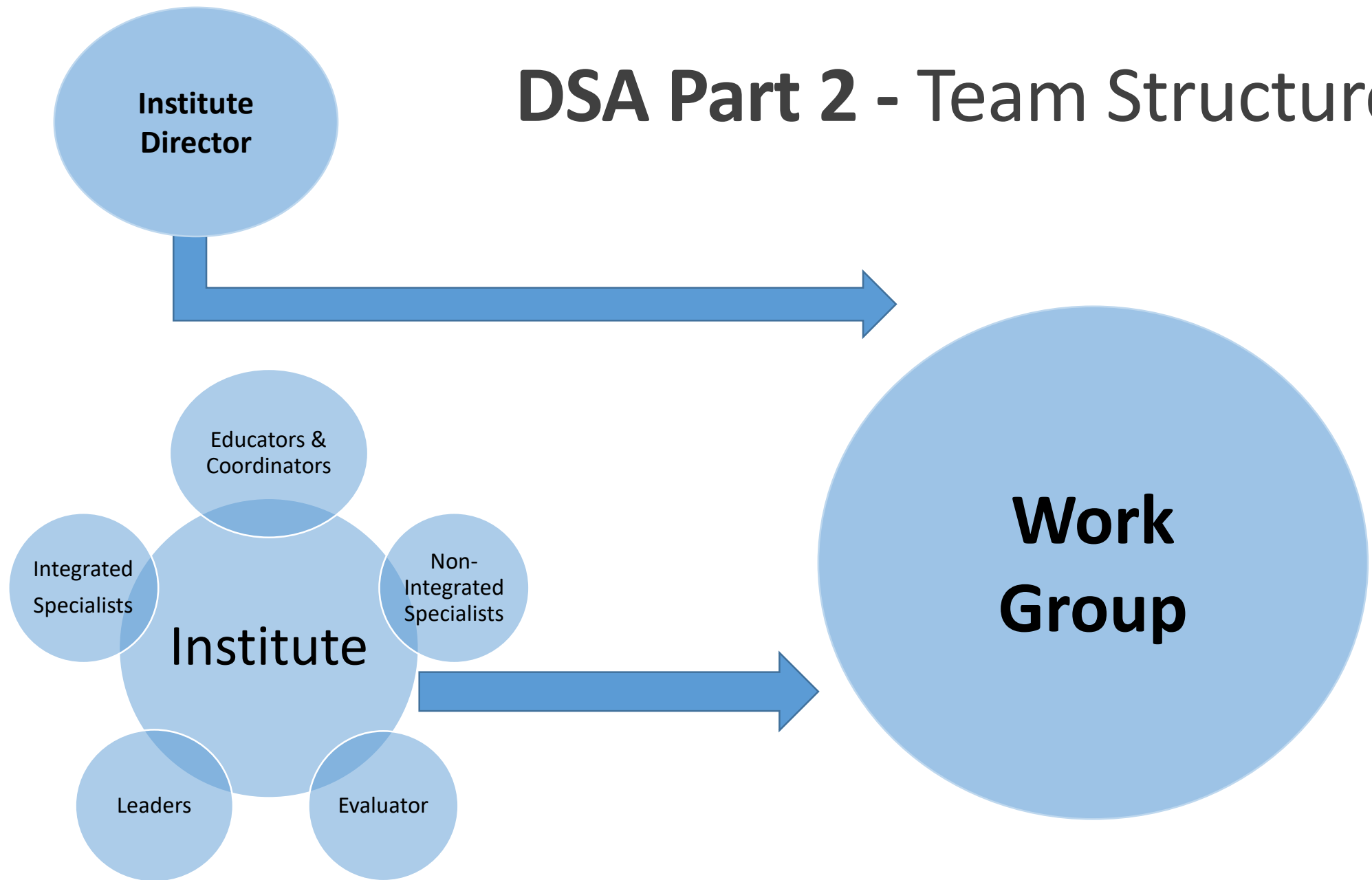


# DSA Part 2 – Goals, Leaders, Participants

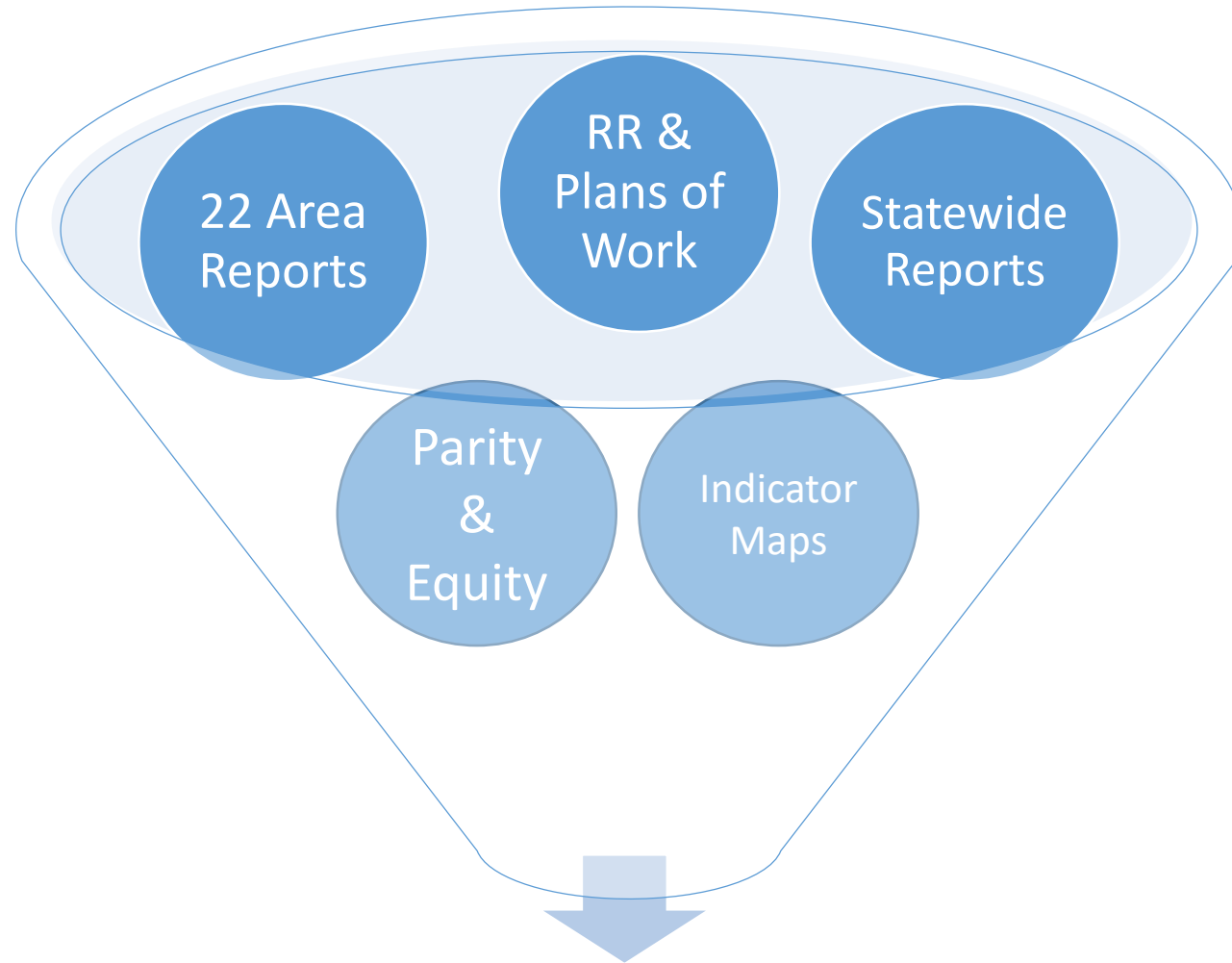
**This is where  
we are going**



# DSA Part 2 - Team Structure



# DSA Part 2 – Components & Deliverables



**Institute & Interdisciplinary Program Priorities**

