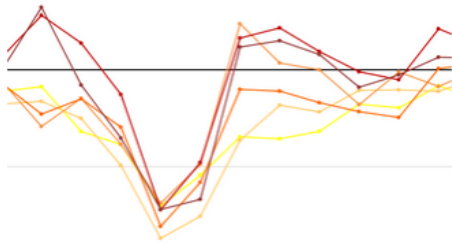


# How to Use Net Migration

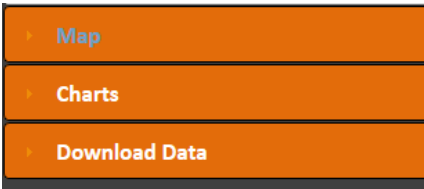


1. Start on the Resources page of APL: [www.apl.wisc.edu/resources](http://www.apl.wisc.edu/resources).
2. Select the third option: Net Migration and click the link in the text.

## Net-Migration Patterns for US Counties



The **Net Migration** website highlights trends and patterns in where Americans are moving by providing reliable estimates of net migration broken down by age, race, Hispanic-origin, and sex for all U.S. counties each decade from 1950 to 2010.



3. Once on the site you may look at maps, charts or download data using the menu in the lower left of the screen.

4. Using charting you can view how many people came in or left a county. On the chart the line above the zero line represents those moving into the county and below the line those that left the county.

Charts

Select a County(Up to 3)

Use the combo boxes below to select up to three counties.

Selection 1: Clear  
--Select a State-- --Select a County--

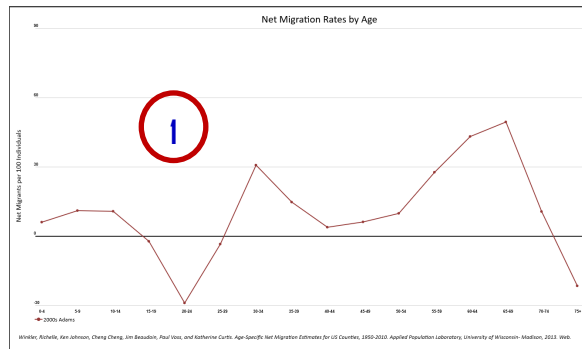
Selection 2: Clear  
--Select a State-- --Select a County--

Selection 3: Clear  
--Select a State-- --Select a County--

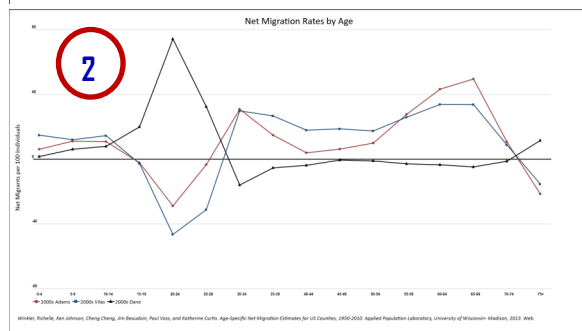
Choose a Decade(s): 1950s 1960s 1970s 1980s 1990s 2000s

Clear All Selections Save as PNG

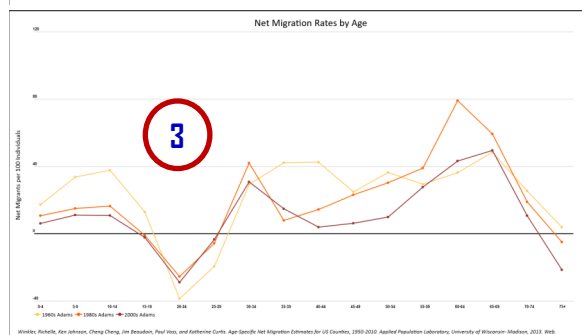
Note: Charts combine some counties into groupings where boundaries have changed over the decades. Other counties are missing data from prior decades. Counties affected by these boundary changes are summarized [here](#).



1 The first chart shows Adams County with data from the 2000s. You can also compare counties to each other—up to three.



2 The second chart shows the same data as above, but with Vilas and Dane counties added. The sharp peak in Dane County for 20-24 year olds moving in is an indication of the impact a college may have on a county.



3 The third chart shows the same county over time. Here is Adams County in 1960s, 1980s and 2000s. You can see how the number of young people has dropped and in 1980 there was a spike in the 60-64 year old age group.

5. You can save your chart as a PNG.

